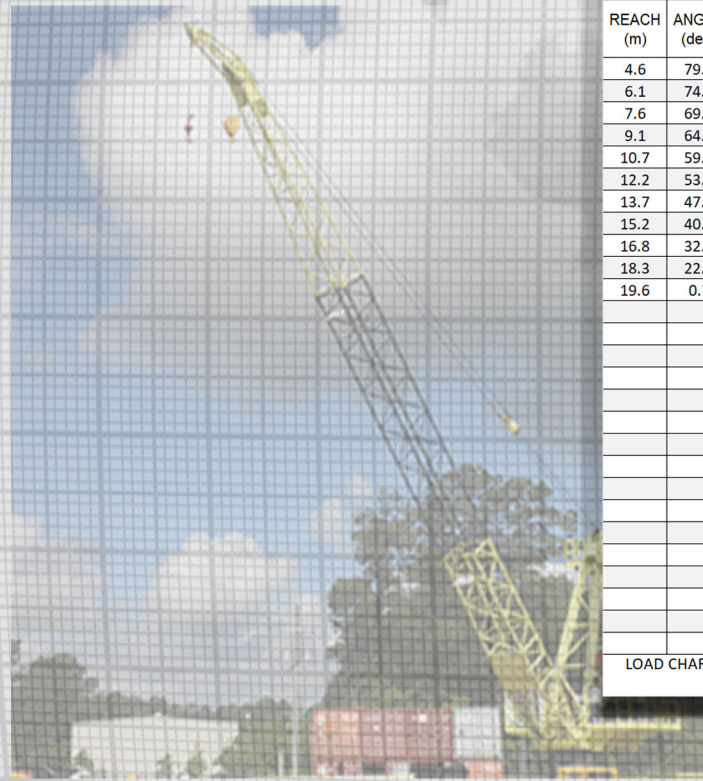


# L80

## Load Capacity By Boom Length



US UNITS: BOOM LENGTH = 60 Feet				US UNITS: BOOM LENGTH = 80 Feet				US UNITS: BOOM LENGTH = 100 Feet				US UNITS: BOOM LENGTH = 120 Feet				US UNITS: BOOM LENGTH = 140 Feet			
REACH (ft)	ANGLE (deg)	ONBOARD LOAD (STATIC) lbs	OFFBOARD LOAD (DYNAMIC) lbs	REACH (ft)	ANGLE (deg)	ONBOARD LOAD (STATIC) lbs	OFFBOARD LOAD (DYNAMIC) lbs	REACH (ft)	ANGLE (deg)	ONBOARD LOAD (STATIC) lbs	OFFBOARD LOAD (DYNAMIC) lbs	REACH (ft)	ANGLE (deg)	ONBOARD LOAD (STATIC) lbs	OFFBOARD LOAD (DYNAMIC) lbs	REACH (ft)	ANGLE (deg)	ONBOARD LOAD (STATIC) lbs	OFFBOARD LOAD (DYNAMIC) lbs
15	79.8	140,123	84,711	15	82.4	137,390	83,059	15	83.9	109,536	66,219	20	82.5	74,646	45,127	15	85.7	60,942	36,842
20	74.9	106,298	64,262	20	78.8	105,478	63,766	20	81.0	99,149	59,940	25	80.1	69,038	41,737	20	83.6	53,770	32,506
25	69.9	85,313	51,576	25	75.1	84,506	51,088	25	78.1	83,698	50,599	30	77.7	64,680	39,102	25	81.5	49,222	29,757
30	64.7	71,023	42,937	30	71.3	70,224	42,454	30	75.2	69,425	41,971	35	75.2	58,286	35,237	30	79.5	45,699	27,627
35	59.3	60,664	36,674	35	67.5	59,871	36,195	35	72.2	59,079	35,716	40	72.7	50,447	30,498	35	77.4	42,883	25,925
40	53.6	52,811	31,927	40	63.6	52,023	31,450	40	69.1	51,235	30,974	45	70.2	44,299	26,781	40	75.3	40,570	24,526
45	47.4	46,653	28,204	45	59.5	45,868	27,729	45	66.0	45,083	27,255	50	67.7	39,349	23,788	45	73.1	38,629	23,353
50	40.5	41,694	25,206	50	55.2	40,912	24,733	50	62.9	40,130	24,260	55	65.1	35,277	21,327	50	71.0	36,969	22,349
55	32.5	37,615	22,740	55	50.8	36,836	22,269	55	59.6	36,056	21,797	60	62.4	31,869	19,266	55	68.8	34,497	20,855
60	22.1	34,201	20,676	60	46.0	33,423	20,206	60	56.2	32,646	19,736	65	59.7	28,975	17,517	60	66.6	31,092	18,797
64.4	0.7	31,631	19,122	65	40.8	30,526	18,454	65	52.7	29,750	17,985	70	56.9	26,486	16,012	65	64.3	28,199	17,048
				70	34.9	28,034	16,948	70	49.0	27,260	16,480	75	54.0	24,323	14,704	70	62.1	25,712	15,544
				75	28.0	25,869	15,639	75	45.1	25,096	15,172	80	50.9	22,426	13,558	75	59.7	23,550	14,237
				80	19.1	23,970	14,491	80	40.9	23,198	14,024	85	47.8	20,749	12,544	80	57.3	21,655	13,091
				84.4	0.6	22,485	13,593	85	36.3	21,520	13,010	90	44.5	19,256	11,641	85	54.8	19,979	12,078
								90	31.1	20,026	12,107	95	41.0	17,917	10,832	90	52.3	18,486	11,176
								95	25.0	18,687	11,297	100	37.2	16,711	10,103	95	49.7	17,148	10,367
								100	17.1	17,479	10,567	105	33.0	15,618	9,442	100	46.9	15,943	9,638
								104.4	0.6	16,514	9,983	110	28.4	14,623	8,840	105	44.1	14,850	8,978
												115	22.8	13,714	8,291	110	41.0	13,856	8,377
												120	15.6	12,879	7,786	115	37.8	12,947	7,827
												124.4	0.5	12,202	7,377	120	34.3	12,113	7,323
																125	30.5	11,345	6,859
																130	26.2	10,636	6,430
																135	21.1	9,979	6,033
																140	14.4	9,368	5,663
																144.4	0.5	8,866	5,360

SI UNITS BOOM LENGTH = 19 Meters				SI UNITS BOOM LENGTH = 25 Meters				SI UNITS BOOM LENGTH = 31 Meters				SI UNITS BOOM LENGTH = 38 Meters				SI UNITS BOOM LENGTH = 44 Meters			
REACH (m)	ANGLE (deg)	ONBOARD LOAD (STATIC) Kg	OFFBOARD LOAD (DYNAMIC) Kg	REACH (m)	ANGLE (deg)	ONBOARD LOAD (STATIC) Kg	OFFBOARD LOAD (DYNAMIC) Kg	REACH (m)	ANGLE (deg)	ONBOARD LOAD (STATIC) Kg	OFFBOARD LOAD (DYNAMIC) Kg	REACH (m)	ANGLE (deg)	ONBOARD LOAD (STATIC) Kg	OFFBOARD LOAD (DYNAMIC) Kg	REACH (m)	ANGLE (deg)	ONBOARD LOAD (STATIC) Kg	OFFBOARD LOAD (DYNAMIC) Kg
4.6	79.8	63,692	38,505	4.6	82.4	62,450	37,754	4.6	83.9	49,789	30,100	6.1	82.5	33,930	20,512	4.6	85.7	27,701	16,746
6.1	74.9	48,317	29,210	6.1	78.8	47,945	28,985	6.1	81.0	45,068	27,245	7.6	80.1	31,381	18,971	6.1	83.6	24,441	14,776
7.6	69.9	38,779	23,443	7.6	75.1	38,412	23,222	7.6	78.1	38,045	23,000	9.1	77.7	29,400	17,774	7.6	81.5	22,374	13,526
9.1	64.7	32,283	19,517	9.1	71.3	31,920	19,297	9.1	75.2	31,557	19,078	10.7	75.2	26,494	16,017	9.1	79.5	20,772	12,558
10.7	59.3	27,575	16,670	10.7	67.5	27,214	16,452	10.7	72.2	26,854	16,235	12.2	72.7	22,930	13,863	10.7	77.4	19,492	11,784
12.2	53.6	24,005	14,512	12.2	63.6	23,647	14,296	12.2	69.1	23,289	14,079	13.7	70.2	20,136	12,173	12.2	75.3	18,441	11,148
13.7	47.4	21,206	12,820	13.7	59.5	20,849	12,604	13.7	66.0	20,492	12,389	15.2	67.7	17,886	10,813	13.7	73.1	17,559	10,615
15.2	40.5	18,952	11,457	15.2	55.2	18,596	11,242	15.2	62.9	18,241	11,027	16.8	65.1	16,035	9,694	15.2	71.0	16,804	10,159
16.8	32.5	17,098	10,336	16.8	50.8	16,744	10,122	16.8	59.6	16,389	9,908	18.3	62.4	14,486	8,757	16.8	68.8	15,680	9,480
18.3	22.1	15,546	9,398	18.3	46.0	15,192	9,184	18.3	56.2	14,839	8,971	19.8	59.7	13,170	7,962	18.3	66.6	14,133	8,544
19.6	0.7	14,378	8,692	19.8	40.8	13,875	8,388	19.8	52.7	13,523	8,175	21.3	56.9	12,039	7,278	19.8	64.3	12,818	7,749
				21.3	34.9	12,743	7,704	21.3	49.0	12,391	7,491	22.9	54.0	11,056	6,684	21.3	62.1	11,687	7,065
				22.9	28.0	11,759	7,109	22.9	45.1	11,407	6,896	24.4	50.9	10,194	6,163	22.9	59.7	10,705	6,471
				24.4	19.1	10,895	6,587	24.4	40.9	10,545	6,375	25.9	47.8	9,431	5,702	24.4	57.3	9,843	5,951
				25.7	0.6	10,220	6,179	25.9	36.3	9,782	5,914	27.4	44.5	8,753	5,291	25.9	54.8	9,081	5,490
								27.4	31.1	9,103	5,503	29.0	41.0	8,144	4,923	27.4	52.3	8,403	5,080
								29.0	25.0	8,494	5,135	30.5	37.2	7,596	4,592	29.0	49.7	7,795	4,712
								30.5	17.1	7,945	4,803	32.0	33.0	7,099	4,292	30.5	46.9	7,247	4,381
								31.8	0.6	7,506	4,538	33.5	28.4	6,647	4,018	32.0	44.1	6,750	4,081
												35.1	22.8	6,234	3,769	33.5	41.0	6,298	3,808
												36.6	15.6	5,854	3,539	35.1	37.8	5,885	3,558
												37.9	0.5	5,546	3,353	36.6	34.3	5,506	3,329
																38.1	30.5	5,157	3,118
																39.6	26.2	4,835	2,923
																41.2	21.1	4,536	2,742
																42.7	14.4	4,258	2,574
																44.0	0.5	4,030	2,436

LOAD CHART CREATOR: DSHAD 12/2018 rev1.0 - Values listed subject to change without notice. - Values reflect structural capacities and may vary with configuration via client specification. Offboard denotes a default CV=2. See State Load Charts are available by request and in conjunction with client supplied vessel data.

Designed and Manufactured under the controls set forth

by



2C-0067

# TECHCRANE

Techcrane Designs Previously Approved By

