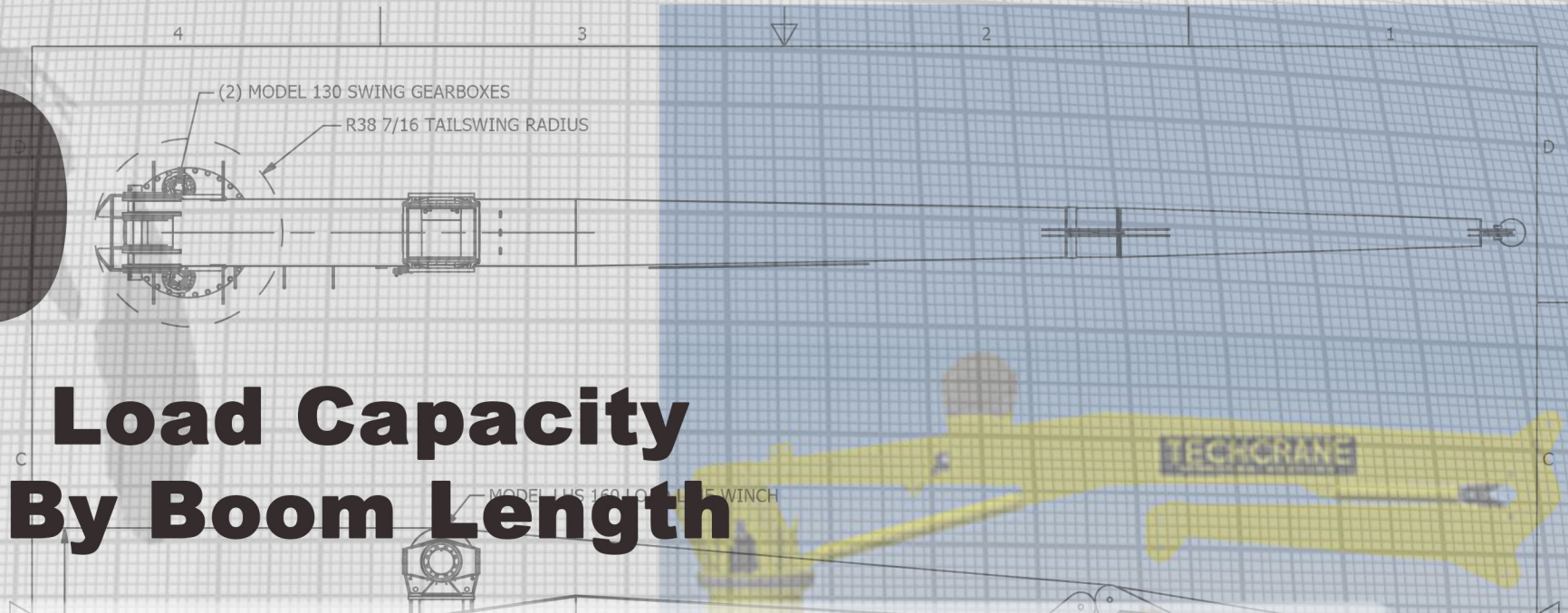


K30

Load Capacity By Boom Length

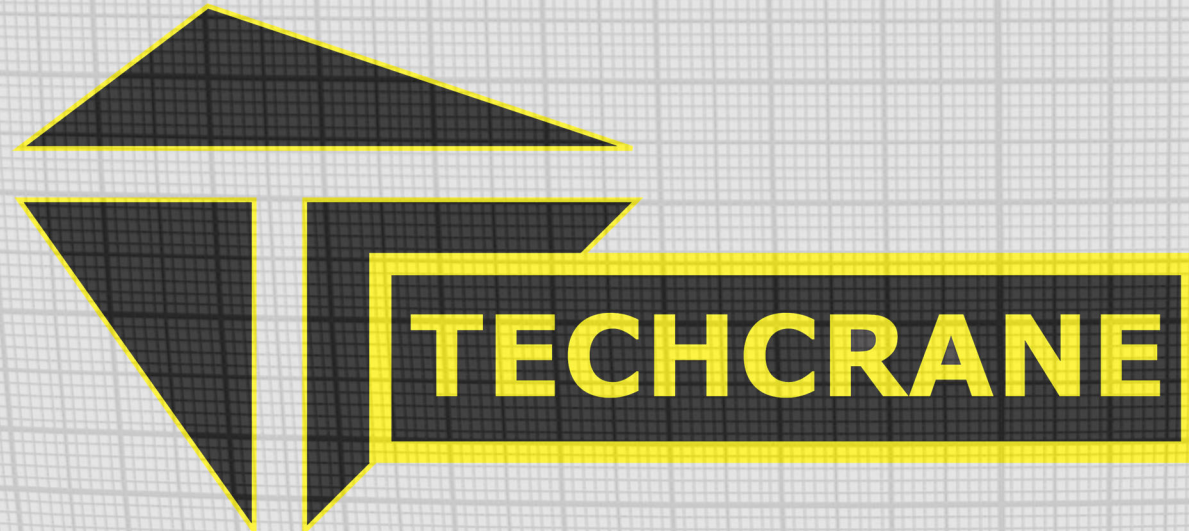


MODEL K30-35-50				MODEL K30-40-60				MODEL K30-50-70															
US UNITS: KNUCKLE DOWN 30 (ft)				US UNITS: EXTENDED BOOM LENGTH: 50 (ft)				US UNITS: KNUCKLE DOWN 40 (ft)				US UNITS: EXTENDED BOOM LENGTH: 60 (ft)				US UNITS: KNUCKLE DOWN 50 (ft)				US UNITS: EXTENDED BOOM LENGTH: 70 (ft)			
REACH (ft)	ANGLE (deg)	ONBOARD LOAD (STATIC) lbs	OFFBOARD LOAD (DYNAMIC) lbs	REACH (ft)	ANGLE (deg)	ONBOARD LOAD (STATIC) lbs	OFFBOARD LOAD (DYNAMIC) lbs	REACH (ft)	ANGLE (deg)	ONBOARD LOAD (STATIC) lbs	OFFBOARD LOAD (DYNAMIC) lbs	REACH (ft)	ANGLE (deg)	ONBOARD LOAD (STATIC) lbs	OFFBOARD LOAD (DYNAMIC) lbs	REACH (ft)	ANGLE (deg)	ONBOARD LOAD (STATIC) lbs	OFFBOARD LOAD (DYNAMIC) lbs	REACH (ft)	ANGLE (deg)	ONBOARD LOAD (STATIC) lbs	OFFBOARD LOAD (DYNAMIC) lbs
6	80.2	40,000	26,600	8.5	80.3	40,000	26,600	7	80.0	40,000	26,600	10.5	80.0	40,000	26,600	8.5	80.3	40,000	26,600	12.1	80.1	40,000	26,600
10	73.4	35,880	23,860	10	78.5	40,000	26,600	10	75.6	40,000	26,600	15	75.6	39,480	26,254	10	78.5	40,000	26,600	15	77.7	38,990	25,928
15	64.7	34,200	22,743	15	72.6	34,010	22,617	15	68.0	35,880	23,860	20	70.6	36,320	24,153	15	72.6	34,010	22,617	20	73.4	37,440	24,898
20	55.2	30,400	20,216	20	66.5	32,330	21,499	20	60.0	34,200	22,743	25	65.4	31,927	21,231	20	66.5	29,240	19,445	25	69.1	34,110	22,683
25	44.4	23,280	15,481	25	60.0	29,690	19,744	25	51.3	30,400	20,216	30	60.0	26,780	17,809	25	60.0	26,030	17,310	30	64.7	26,260	17,463
30	31.0	19,470	12,948	30	53.2	23,900	15,894	30	41.4	23,280	15,481	35	54.3	22,396	14,893	30	53.2	20,440	13,593	35	60.0	22,500	14,963
35	0.0	15,810	10,514	35	45.6	19,770	13,147	35	29.0	19,470	12,948	40	48.2	19,109	12,707	35	45.6	18,990	12,628	40	55.2	19,200	12,768
				40	36.9	16,670	11,086	40	0.0	15,810	10,514	45	41.4	16,552	11,007	40	36.9	15,222	10,123	45	50.0	16,630	11,059
				45	25.9	14,250	9,476					50	33.6	14,506	9,646	45	25.9	12,480	8,299	50	44.4	14,570	9,689
				50	0.0	12,230	8,133					55	23.6	12,833	8,534	50	0.0	10,030	6,670	55	38.2	12,890	8,572
												60	0.0	9,852	6,552					60	31.0	11,490	7,641
																				65	21.8	10,310	6,856
																				70	0.0	7,920	5,267

SI UNITS: KNUCKLE DOWN 10 Meters				SI UNITS EXTENDED BOOM LENGTH = 15 Meters				SI UNITS: KNUCKLE DOWN 12 Meters				SI UNITS EXTENDED BOOM LENGTH = 18 Meters				SI UNITS: KNUCKLE DOWN 15 Meters				SI UNITS EXTENDED BOOM LENGTH = 21 Meters			
REACH (m)	ANGLE (deg)	ONBOARD LOAD (STATIC) Kg	OFFBOARD LOAD (DYNAMIC) Kg	REACH (m)	ANGLE (deg)	ONBOARD LOAD (STATIC) Kg	OFFBOARD LOAD (DYNAMIC) Kg	REACH (m)	ANGLE (deg)	ONBOARD LOAD (STATIC) Kg	OFFBOARD LOAD (DYNAMIC) Kg	REACH (m)	ANGLE (deg)	ONBOARD LOAD (STATIC) Kg	OFFBOARD LOAD (DYNAMIC) Kg	REACH (m)	ANGLE (deg)	ONBOARD LOAD (STATIC) Kg	OFFBOARD LOAD (DYNAMIC) Kg	REACH (m)	ANGLE (deg)	ONBOARD LOAD (STATIC) Kg	OFFBOARD LOAD (DYNAMIC) Kg
1.8	80.2	18,182	12,091	2.6	80.3	18,182	12,091	2.1	80.0	18,182	12,091	3.2	80.0	18,182	12,091	2.6	80.3	18,182	12,091	3.7	80.1	18,182	12,091
3.0	73.4	16,309	10,846	3.0	78.5	18,182	12,091	3.0	75.6	18,182	12,091	4.6	75.6	17,945	11,934	3.0	78.5	18,182	12,091	4.6	77.7	17,723	11,786
4.6	64.7	15,545	10,338	4.6	72.6	15,459	10,280	4.6	68.0	16,309	10,846	6.1	70.6	16,509	10,979	4.6	72.6	15,459	10,280	6.1	73.4	17,018	11,317
6.1	55.2	13,818	9,189	6.1	66.5	14,695	9,772	6.1	60.0	15,545	10,338	7.6	65.4	14,512	9,651	6.1	66.5	13,291	8,838	7.6	69.1	15,505	10,311
7.6	44.4	10,582	7,037	7.6	60.0	13,495	8,974	7.6	51.3	13,818	9,189	9.1	60.0	12,173	8,095	7.6	60.0	11,832	7,868	9.1	64.7	11,936	7,938
9.1	31.0	8,850	5,885	9.1	53.2	10,864	7,224	9.1	41.4	10,582	7,037	10.7	54.3	10,180	6,770	9.1	53.2	9,291	6,178	10.7	60.0	10,227	6,801
10.7	0.0	7,186	4,779	10.7	45.6	8,986	5,976	10.7	29.0	8,850	5,885	12.2	48.2	8,686	5,776	10.7	45.6	8,632	5,740	12.2	55.2	8,727	5,804
				12.2	36.9	7,577	5,039	12.2	0.0	7,186	4,779	13.7	41.4	7,524	5,003	12.2	36.9	6,919	4,601	13.7	50.0	7,559	5,027
				13.7	25.9	6,477	4,307					15.2	33.6	6,594	4,385	13.7	25.9	5,673	3,772	15.2	44.4	6,623	4,404
				15.2	0.0	5,559	3,697					16.8	23.6	5,833	3,879	15.2	0.0	4,559	3,032	16.8	38.2	5,859	3,896
												18.3	0.0	4,478	2,978					18.3	31.0	5,223	3,473
																				19.8	21.8	4,686	3,116
																				21.3	0.0	3,600	2,394

LOAD CHART CREATOR: DSHAD 12/2018 rev.1.0 - Values listed subject to change without notice. - Values reflect structural capacities and may vary with configuration via client specification. Offboard denotes a default CV=2. Sea State Load Charts are available by request and in conjunction with client supplied vessel data.

Designed and Manufactured
under the controls set forth



TechCrane Designs
Previously Approved By

