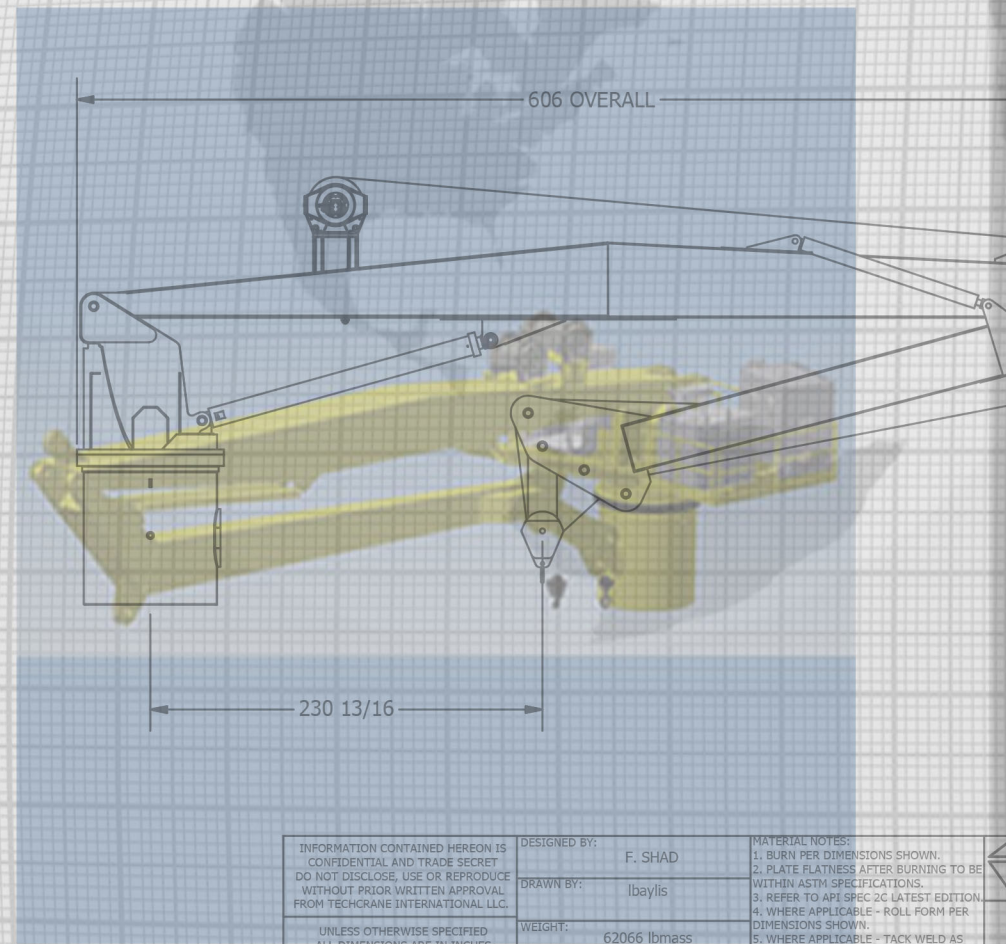


K120

Load Capacity By Boom Length



MODEL K120-55-90

US UNITS: KNUCKLE DOWN 55 (ft)			
REACH (ft)	ANGLE (deg)	ONBOARD LOAD (STATIC) lbs	OFFBOARD LOAD (DYNAMIC) lbs
7	82.7	140,000	93,100
10	79.6	140,000	93,100
15	74.2	140,000	93,100
20	68.7	140,000	93,100
25	63.0	134,370	89,356
30	57.0	117,800	78,337
35	50.5	91,440	60,808
40	43.4	79,620	52,947
45	35.1	67,804	45,090
50	24.6	58,446	38,867
55	0.0	48,789	32,445

MODEL K120-85-120

US UNITS: EXTENDED BOOM LENGTH: 90 (ft)			
REACH (ft)	ANGLE (deg)	ONBOARD LOAD (STATIC) lbs	OFFBOARD LOAD (DYNAMIC) lbs
11.8	82.5	140,000	93,100
15	80.4	140,000	93,100
20	77.2	124,335	82,683
25	73.9	102,822	68,377
30	70.6	88,396	58,783
35	67.1	78,018	51,882
40	63.6	71,850	47,780
45	60.0	66,579	44,275
50	56.3	56,940	37,865
55	52.4	52,760	35,086
60	48.2	50,197	33,381
65	43.8	47,621	31,668
70	39.0	40,259	26,772
75	33.6	36,423	24,221
80	27.3	28,983	19,274
85	19.2	22,400	14,896
90	0.0	15,080	10,028

US UNITS: KNUCKLE DOWN 85 (ft)			
REACH (ft)	ANGLE (deg)	ONBOARD LOAD (STATIC) lbs	OFFBOARD LOAD (DYNAMIC) lbs
11.8	82.1	140,000	93,100
15	79.9	124,335	82,683
20	76.4	102,822	68,377
25	72.9	88,396	58,783
30	69.4	78,018	51,882
35	65.7	71,850	47,780
40	62.0	66,579	44,275
45	58.1	56,940	37,865
50	54.0	52,760	35,086
55	49.7	50,197	33,381
60	45.1	47,621	31,668
65	40.1	40,259	26,772
70	34.6	35,664	23,717
75	28.1	25,600	17,024
80	19.8	20,210	13,440
85	0.0	14,005	9,313

US UNITS: EXTENDED BOOM LENGTH: 120 (ft)			
REACH (ft)	ANGLE (deg)	ONBOARD LOAD (STATIC) lbs	OFFBOARD LOAD (DYNAMIC) lbs
15.8	82.5	115,300	76,675
20	80.4	101,700	67,631
25	78.0	81,445	54,161
30	75.6	70,018	46,562
35	73.1	61,798	41,096
40	70.6	56,912	37,847
45	68.0	52,737	35,070
50	65.4	45,102	29,993
55	62.8	41,792	27,791
60	60.0	39,761	26,441
65	57.2	37,721	25,084
70	54.3	31,889	21,206
75	51.3	28,851	19,186
80	48.2	22,958	15,267
85	44.9	17,743	11,799
90	41.4	11,945	7,943
95	37.7	9,007	5,990
100	33.6	7,802	5,188
110	23.6	6,965	4,632
120	0.0	4,888	3,251

SI UNITS: KNUCKLE DOWN 16 Meters

REACH (m)	ANGLE (deg)	ONBOARD LOAD (STATIC) Kg	OFFBOARD LOAD (DYNAMIC) Kg
2.1	82.7	63,636	42,318
3.0	79.6	63,636	42,318
4.6	74.2	63,636	42,318
6.1	68.7	63,636	42,318
7.6	63.0	61,077	40,616
9.1	57.0	53,545	35,608
10.7	50.5	41,564	27,640
12.2	43.4	36,191	24,067
13.7	35.1	30,820	20,495
15.2	24.6	26,566	17,667
16.8	0.0	22,177	14,748

SI UNITS EXTENDED BOOM LENGTH = 27 Meters

REACH (m)	ANGLE (deg)	ONBOARD LOAD (STATIC) Kg	OFFBOARD LOAD (DYNAMIC) Kg
3.6	82.5	63,636	42,318
4.6	80.4	63,636	42,318
6.1	77.2	56,516	37,583
7.6	73.9	46,737	31,080
9.1	70.6	40,180	26,720
10.7	67.1	35,463	23,583
12.2	63.6	32,659	21,718
13.7	60.0	30,263	20,125
15.2	56.3	25,882	17,212
16.8	52.4	23,982	15,948
18.3	48.2	22,817	15,173
19.8	43.8	21,646	14,395
21.3	39.0	18,300	12,169
22.9	33.6	16,556	11,010
24.4	27.3	13,174	8,761
25.9	19.2	10,182	6,771
27.4	0.0	6,855	4,558

SI UNITS: KNUCKLE DOWN 25 Meters

REACH (m)	ANGLE (deg)	ONBOARD LOAD (STATIC) Kg	OFFBOARD LOAD (DYNAMIC) Kg
3.6	82.1	63,636	42,318
4.6	79.9	56,516	37,583
6.1	76.4	46,737	31,080
7.6	72.9	40,180	26,720
9.1	69.4	35,463	23,583
10.7	65.7	32,659	21,718
12.2	62.0	30,263	20,125
13.7	58.1	25,882	17,212
15.2	54.0	23,982	15,948
16.8	49.7	22,817	15,173
18.3	45.1	21,646	14,395
19.8	40.1	18,300	12,169
21.3	34.6	16,211	10,780
22.9	28.1	11,636	7,738
24.4	19.8	9,186	6,109
25.9	0.0	6,366	4,233

SI UNITS EXTENDED BOOM LENGTH = 36 Meters

REACH (m)	ANGLE (deg)	ONBOARD LOAD (STATIC) Kg	OFFBOARD LOAD (DYNAMIC) Kg
4.8	82.5	52,409	34,852
6.1	80.4	46,227	30,741
7.6	78.0	37,021	24,619
9.1	75.6	31,826	21,165
10.7	73.1	28,090	18,680
12.2	70.6	25,869	17,203
13.7	68.0	23,971	15,941
15.2	65.4	20,501	13,633
16.8	62.8	18,996	12,632
18.3	60.0	18,073	12,019
19.8	57.2	17,146	11,402
21.3	54.3	14,495	9,639
22.9	51.3	13,114	8,721
24.4	48.2	10,435	6,940
25.9	44.9	8,065	5,363
27.4	41.4	5,429	3,611
29.0	37.7	4,094	2,723
30.5	33.6	3,546	2,358
33.5	23.6	3,166	2,105
36.6	0.0	2,222	1,478

INFORMATION CONTAINED HEREON IS CONFIDENTIAL AND TRADE SECRET. DO NOT DISCLOSE, USE OR REPRODUCE WITHOUT PRIOR WRITTEN APPROVAL FROM TECHCRANE INTERNATIONAL LLC.	DESIGNED BY: F. SHAD	MATERIAL NOTES: 1. BURN PER DIMENSIONS SHOWN. 2. PLATE FLATNESS AFTER BURNING TO BE WITHIN ASTM SPECIFICATIONS. 3. REFER TO API SPEC 2C LATEST EDITION. 4. WHERE APPLICABLE - ROLL FORM PER DIMENSIONS SHOWN. 5. WHERE APPLICABLE - TACK WELD AS REQUIRED TO SECURE ROLLED CAN. DESIGN STATE: WorkInProgress
	DRAWN BY: lbaylis	
UNLESS OTHERWISE SPECIFIED ALL DIMENSIONS ARE IN INCHES [] INDICATES MILLIMETERS	WEIGHT: 62066 lbmass	
TOLERANCES FRACTIONAL DIMENSIONS $\pm .01/-0$ SURFACE FINISHES 125	APPROVED BY: SEE APPROVAL STAMP	DATE:
	FILE NAME: C:\MFG\DESIGN\PARTS\BOOM_SERIES PRELIMINARY K120 K121.rvt	MATERIAL:

LOAD CHART CREATOR: DSHAD 12/2018 rev1.0 - Values listed subject to change without notice. - Values reflect structural capacities and may vary with configuration via client specification. Offboard denotes a default CV=2. Sea State Load Charts are available by request and in conjunction with client supplied vessel data.

Designed and Manufactured under the controls set forth



TECHCRANE

Techcrane Designs Previously Approved By

