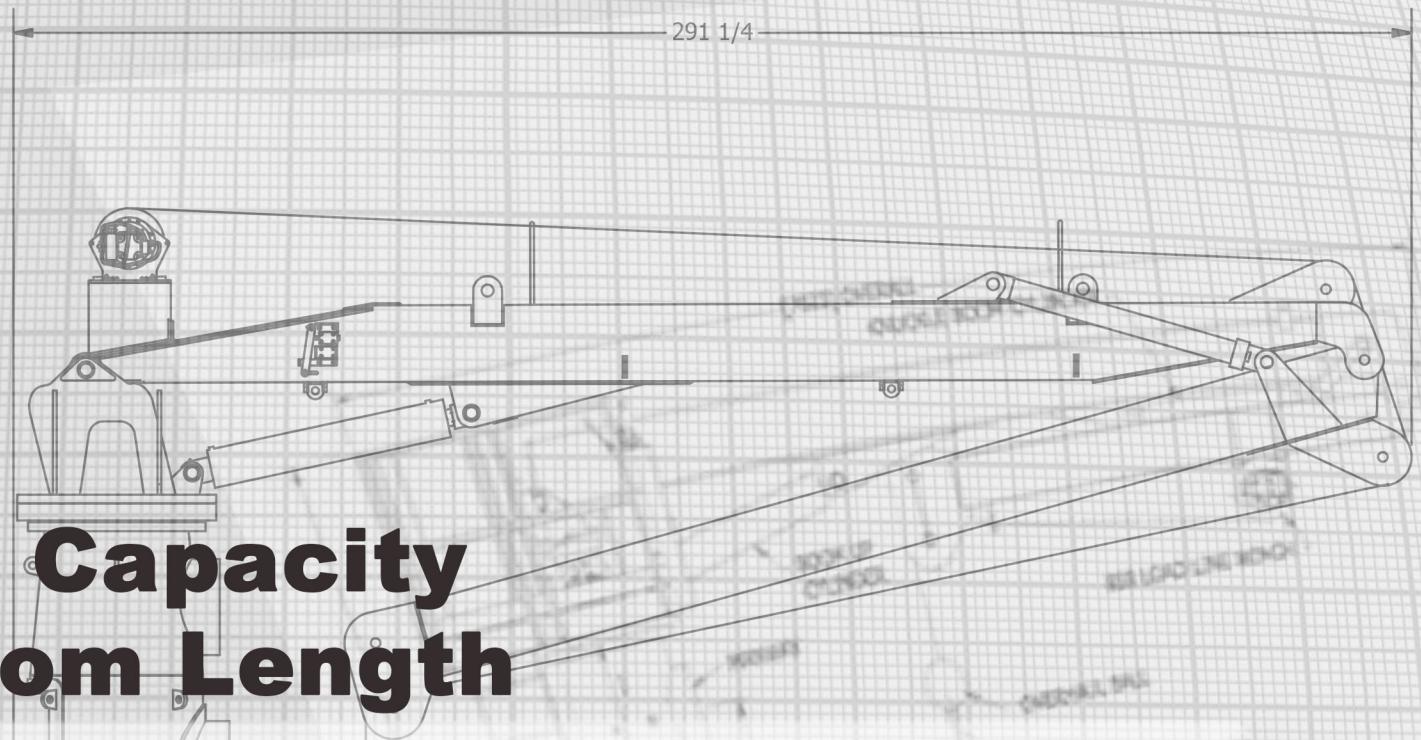


K10



Load Capacity By Boom Length

MODEL K10-15-20				MODEL K10-28-40				MODEL K10-40-60															
US UNITS: KNUCKLE DOWN 15 (ft)				US UNITS: EXTENDED BOOM LENGTH: 20 (ft)				US UNITS: KNUCKLE DOWN 28 (ft)				US UNITS: EXTENDED BOOM LENGTH: 40 (ft)				US UNITS: KNUCKLE DOWN 40 (ft)				US UNITS: EXTENDED BOOM LENGTH: 60 (ft)			
REACH (ft)	ANGLE (deg)	ONBOARD LOAD (STATIC) lbs	OFFBOARD LOAD (DYNAMIC) lbs	REACH (ft)	ANGLE (deg)	ONBOARD LOAD (STATIC) lbs	OFFBOARD LOAD (DYNAMIC) lbs	REACH (ft)	ANGLE (deg)	ONBOARD LOAD (STATIC) lbs	OFFBOARD LOAD (DYNAMIC) lbs	REACH (ft)	ANGLE (deg)	ONBOARD LOAD (STATIC) lbs	OFFBOARD LOAD (DYNAMIC) lbs	REACH (ft)	ANGLE (deg)	ONBOARD LOAD (STATIC) lbs	OFFBOARD LOAD (DYNAMIC) lbs	REACH (ft)	ANGLE (deg)	ONBOARD LOAD (STATIC) lbs	OFFBOARD LOAD (DYNAMIC) lbs
2	82.4	11,000	7,315	3	81.4	11,000	7,315	3	83.9	11,000	7,315	6	81.4	11,000	7,315	8	78.5	11,000	7,315	12	78.5	11,000	7,315
5	70.6	11,000	7,315	5	75.6	9,570	6,364	5	79.8	11,000	7,315	10	75.6	11,000	7,315	10	75.6	11,000	7,315	15	75.6	11,000	7,315
10	48.2	9,950	6,617	10	60.0	8,319	5,532	10	69.1	11,000	7,315	15	68.0	10,360	6,889	15	68.0	9,950	6,617	20	70.6	10,030	6,670
15	0.0	6,720	4,469	15	41.4	5,807	3,862	15	57.6	11,000	7,315	20	60.0	8,620	5,732	25	51.3	7,860	5,227	25	65.4	9,810	6,524
				20	0.0	4,516	3,003	20	44.4	8,500	5,653	25	51.3	6,980	4,642	30	41.4	6,030	4,010	30	60.0	8,620	5,732
								25	26.8	7,438	4,946	30	41.4	5,800	3,857	35	29.0	5,100	3,392	35	54.3	6,980	4,642
								28	0.0	5,110	3,398	35	29.0	4,797	3,190	40	0.0	4,500	2,993	40	48.2	5,800	3,857
																				45	41.4	4,797	3,190
																				50	33.6	2,907	1,933
																				55	23.6	1,890	1,257
																				60	0.0	1,000	665

SI UNITS: KNUCKLE DOWN 4 Meters				SI UNITS EXTENDED BOOM LENGTH = 6 Meters				SI UNITS: KNUCKLE DOWN 8 Meters				SI UNITS EXTENDED BOOM LENGTH = 12 Meters				SI UNITS: KNUCKLE DOWN 12 Meters				SI UNITS EXTENDED BOOM LENGTH = 18 Meters			
REACH (m)	ANGLE (deg)	ONBOARD LOAD (STATIC) Kg	OFFBOARD LOAD (DYNAMIC) Kg	REACH (m)	ANGLE (deg)	ONBOARD LOAD (STATIC) Kg	OFFBOARD LOAD (DYNAMIC) Kg	REACH (m)	ANGLE (deg)	ONBOARD LOAD (STATIC) Kg	OFFBOARD LOAD (DYNAMIC) Kg	REACH (m)	ANGLE (deg)	ONBOARD LOAD (STATIC) Kg	OFFBOARD LOAD (DYNAMIC) Kg	REACH (m)	ANGLE (deg)	ONBOARD LOAD (STATIC) Kg	OFFBOARD LOAD (DYNAMIC) Kg	REACH (m)	ANGLE (deg)	ONBOARD LOAD (STATIC) Kg	OFFBOARD LOAD (DYNAMIC) Kg
0.6	82.4	5,000	3,325	0.9	81.4	5,000	3,325	0.9	83.9	5,000	3,325	1.8	81.4	5,000	3,325	2.4	78.5	5,000	3,325	3.7	78.5	5,000	3,325
1.5	70.6	5,000	3,325	1.5	75.6	4,350	2,893	1.5	79.8	5,000	3,325	3.0	75.6	5,000	3,325	3.0	75.6	5,000	3,325	4.6	75.6	5,000	3,325
3.0	48.2	4,523	3,008	3.0	60.0	3,781	2,515	3.0	69.1	5,000	3,325	4.6	68.0	4,709	3,132	4.6	68.0	4,523	3,008	6.1	70.6	4,559	3,032
4.6	0.0	3,055	2,031	4.6	41.4	2,640	1,755	4.6	57.6	5,000	3,325	6.1	60.0	3,918	2,606	7.6	51.3	3,573	2,376	7.6	65.4	4,459	2,965
				6.1	0.0	2,053	1,365	6.1	44.4	3,864	2,569	7.6	51.3	3,173	2,110	9.1	41.4	2,741	1,823	9.1	60.0	3,918	2,606
								7.6	26.8	3,381	2,248	9.1	41.4	2,636	1,753	10.7	29.0	2,318	1,542	10.7	54.3	3,173	2,110
								8.5	0.0	2,323	1,545	10.7	29.0	2,180	1,450	12.2	0.0	2,045	1,360	12.2	48.2	2,636	1,753
																				13.7	41.4	2,180	1,450
																				15.2	33.6	1,321	879
																				16.8	23.6	859	571
																				18.3	0.0	455	302

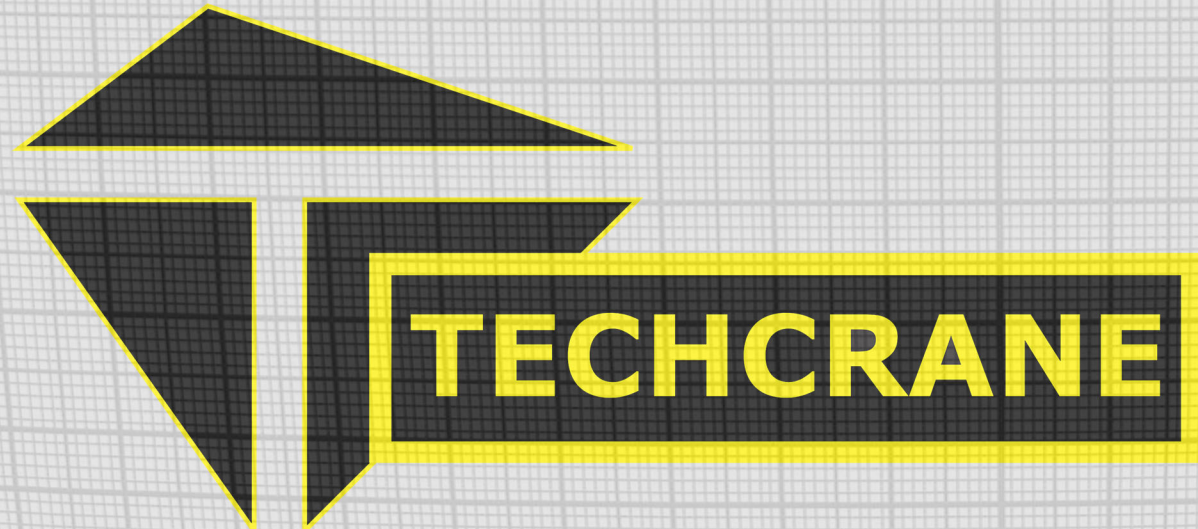
LOAD CHART CREATOR: DSHAD 12/2018 rev1.0 - Values listed subject to change without notice. - Values reflect structural capacities and may vary with configuration via client specification. Offboard denotes a default CV=2. Sea State Load Charts are available by request and in conjunction with client supplied vessel data.

Designed and Manufactured under the controls set forth

by



2C-0067



Techcrane Designs Previously Approved By



CRANE INTERNATIONAL
7639 HARD HAT DRIVE COVINGTON, LA
PHONE (985) 871-0056 FAX (985) 871-0057

REVISION NO: 3.0
SHEET 2 OF 2
1