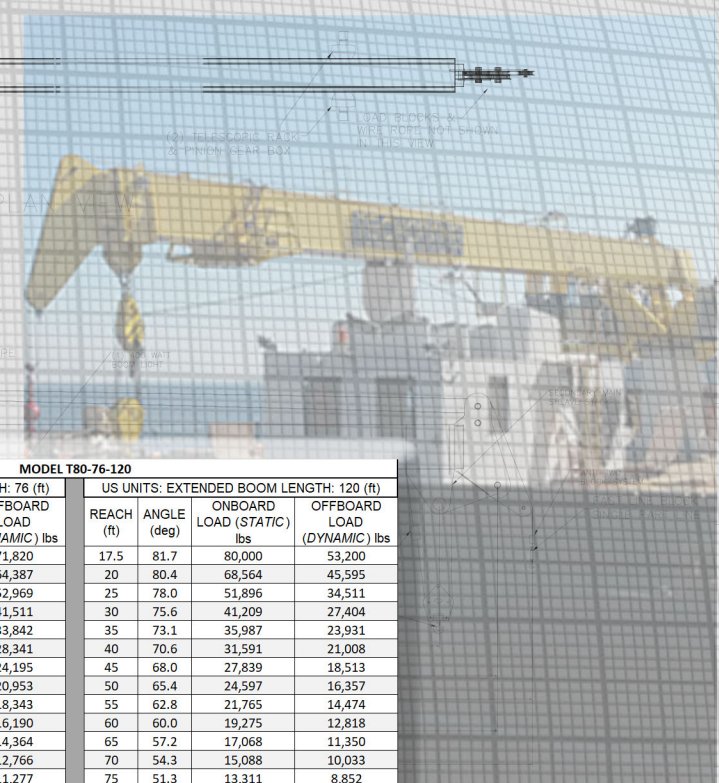


# T80 Load Capacity By Boom Length



MODEL T80-45-82				MODEL T80-56-100				MODEL T80-76-120																			
US UNITS: RETRACTED BOOM LENGTH: 45 (ft)				US UNITS: EXTENDED BOOM LENGTH: 82 (ft)				US UNITS: RETRACTED BOOM LENGTH: 56 (ft)				US UNITS: EXTENDED BOOM LENGTH: 100 (ft)				US UNITS: RETRACTED BOOM LENGTH: 76 (ft)				US UNITS: EXTENDED BOOM LENGTH: 120 (ft)							
REACH (ft)	ANGLE (deg)	ONBOARD LOAD (STATIC) lbs	OFFBOARD LOAD (DYNAMIC) lbs	REACH (ft)	ANGLE (deg)	ONBOARD LOAD (STATIC) lbs	OFFBOARD LOAD (DYNAMIC) lbs	REACH (ft)	ANGLE (deg)	ONBOARD LOAD (STATIC) lbs	OFFBOARD LOAD (DYNAMIC) lbs	REACH (ft)	ANGLE (deg)	ONBOARD LOAD (STATIC) lbs	OFFBOARD LOAD (DYNAMIC) lbs	REACH (ft)	ANGLE (deg)	ONBOARD LOAD (STATIC) lbs	OFFBOARD LOAD (DYNAMIC) lbs	REACH (ft)	ANGLE (deg)	ONBOARD LOAD (STATIC) lbs	OFFBOARD LOAD (DYNAMIC) lbs	REACH (ft)	ANGLE (deg)	ONBOARD LOAD (STATIC) lbs	OFFBOARD LOAD (DYNAMIC) lbs
6.5	81.7	108,000	71,820	12	81.6	108,000	71,820	8	81.8	108,000	71,820	14.5	81.7	108,000	71,820	11	81.7	108,000	71,820	17.5	81.7	80,000	53,200				
10	77.2	108,000	71,820	15	79.5	108,000	71,820	10	79.8	103,650	68,927	15	81.4	100,219	66,646	15	78.7	96,822	64,387	20	80.4	68,564	45,595				
15	70.6	97,330	64,724	20	75.9	92,568	61,558	15	74.5	95,124	63,257	20	78.5	89,502	59,519	20	74.8	79,653	52,969	25	78.0	51,896	34,511				
20	63.6	81,420	54,144	25	72.3	81,352	54,099	20	69.1	88,219	58,666	25	75.6	72,030	47,900	25	70.8	62,423	41,511	30	75.6	41,209	27,404				
25	56.3	65,770	43,737	30	68.6	63,520	42,241	25	63.5	72,252	48,048	30	72.6	63,315	42,104	30	66.8	50,890	33,842	35	73.1	35,987	23,931				
30	48.2	51,324	34,130	35	64.8	55,166	36,685	30	57.6	61,465	40,874	35	69.5	57,015	37,915	35	62.6	42,618	28,341	40	70.6	31,591	21,008				
35	39.0	45,045	29,955	40	60.8	40,156	26,704	35	51.3	50,195	33,380	40	66.5	50,400	33,516	40	58.3	36,384	24,195	45	68.0	27,839	18,513				
40	27.3	39,906	26,537	45	56.7	35,890	23,867	40	44.4	44,243	29,422	45	63.3	45,045	29,955	45	53.7	31,508	20,953	50	65.4	24,597	16,357				
45	0.0	31,777	21,132	50	52.5	27,067	17,999	45	36.5	38,169	25,382	50	60.0	40,583	26,987	50	48.9	27,584	18,343	55	62.8	21,765	14,474				
				55	47.9	21,822	14,511	50	26.8	29,710	19,757	55	56.7	36,750	24,439	55	43.7	24,345	16,190	60	60.0	19,275	12,818				
				60	43.0	19,807	13,171	55	10.8	24,698	16,424	60	53.2	33,548	22,309	60	37.9	21,600	14,364	65	57.2	17,068	11,350				
				65	37.6	18,051	12,004	56	0.0	22,338	14,855	65	49.5	30,713	20,424	65	31.2	19,197	12,766	70	54.3	15,088	10,033				
				70	31.4	16,469	10,952					70	45.6	28,245	18,783	70	22.9	16,958	11,277	75	51.3	13,311	8,852				
				75	23.9	14,940	9,935					75	41.4	26,093	17,352	75	9.3	14,208	9,448	80	48.2	11,702	7,782				
				80	12.7	13,114	8,721					80	36.9	22,470	14,943	80	0.0	12,364	8,222	85	44.9	10,242	6,811				
				82	0.0	11,051	7,349					85	31.8	21,000	13,965	85	0.0			90	41.4	8,905	5,922				
												90	25.9	19,635	13,057	90	0.0			95	37.7	7,677	5,106				
												95	18.2	18,428	12,254	95	0.0			100	33.6	6,549	4,355				
												100	0.0	15,540	10,334	100	0.0			105	29.0	5,504	3,660				
																				110	23.6	4,534	3,015				
																				115	16.6	3,633	2,416				
																				120	0.0	2,792	1,857				

SI UNITS RETRACTED BOOM LENGTH = 13.7 Meters				SI UNITS EXTENDED BOOM LENGTH = 25 Meters				SI UNITS RETRACTED BOOM LENGTH = 17 Meters				SI UNITS EXTENDED BOOM LENGTH = 30 Meters				SI UNITS RETRACTED BOOM LENGTH = 23 Meters				SI UNITS EXTENDED BOOM LENGTH = 36 Meters							
REACH (m)	ANGLE (deg)	ONBOARD LOAD (STATIC) Kg	OFFBOARD LOAD (DYNAMIC) Kg	REACH (m)	ANGLE (deg)	ONBOARD LOAD (STATIC) Kg	OFFBOARD LOAD (DYNAMIC) Kg	REACH (m)	ANGLE (deg)	ONBOARD LOAD (STATIC) Kg	OFFBOARD LOAD (DYNAMIC) Kg	REACH (m)	ANGLE (deg)	ONBOARD LOAD (STATIC) Kg	OFFBOARD LOAD (DYNAMIC) Kg	REACH (m)	ANGLE (deg)	ONBOARD LOAD (STATIC) Kg	OFFBOARD LOAD (DYNAMIC) Kg	REACH (m)	ANGLE (deg)	ONBOARD LOAD (STATIC) Kg	OFFBOARD LOAD (DYNAMIC) Kg	REACH (m)	ANGLE (deg)	ONBOARD LOAD (STATIC) Kg	OFFBOARD LOAD (DYNAMIC) Kg
2.0	81.7	49,091	32,645	3.7	81.6	49,091	32,645	2.4	81.8	49,091	32,645	4.4	81.7	49,091	32,645	3.4	81.7	49,091	32,645	5.3	81.7	36,364	24,182				
3.0	77.2	49,091	32,645	4.6	79.5	49,091	32,645	3.0	79.8	47,114	31,331	4.6	81.4	45,554	30,293	4.6	78.7	44,010	29,267	6.1	80.4	31,165	20,725				
4.6	70.6	44,241	29,420	6.1	75.9	42,076	27,981	4.6	74.5	43,238	28,753	6.1	78.5	40,683	27,054	6.1	74.8	36,206	24,077	7.6	78.0	23,589	15,687				
6.1	63.6	37,009	24,611	7.6	72.3	36,978	24,590	6.1	69.1	40,100	26,666	7.6	75.6	32,741	21,773	7.6	70.8	28,374	18,869	9.1	75.6	18,731	12,456				
7.6	56.3	29,895	19,880	9.1	68.6	28,873	19,200	7.6	63.5	32,842	21,840	9.1	72.6	28,780	19,138	9.1	66.8	23,132	15,383	10.7	73.1	16,358	10,878				
9.1	48.2	23,329	15,514	10.7	64.8	25,075	16,675	9.1	57.6	27,939	18,579	10.7	69.5	25,916	17,234	10.7	62.6	19,372	12,882	12.2	70.6	14,360	9,549				
10.7	39.0	20,475	13,616	12.2	60.8	18,253	12,138	10.7	51.3	22,816	15,173	12.2	66.5	22,909	15,235	12.2	58.3	16,538	10,998	13.7	68.0	12,654	8,415				
12.2	27.3	18,139	12,062	13.7	56.7	16,314	10,849	12.2	44.4	20,110	13,373	13.7	63.3	20,475	13,616	13.7	53.7	14,322	9,524	15.2	65.4	11,180	7,435				
13.7	0.0	14,444	9,605	15.2	52.5	12,303	8,181	13.7	36.5	17,350	11,537	15.2	60.0	18,447	12,267	15.2	48.9	12,538	8,338	16.8	62.8	9,893	6,579				
				16.8	47.9	9,919	6,596	15.2	26.8	13,505	8,981	16.8	56.7	16,705	11,109	16.8	43.7	11,066	7,359	18.3	60.0	8,762	5,826				
				18.3	43.0	9,003	5,987	16.8	10.8	11,226	7,466	18.3	53.2	15,249	10,140	18.3	37.9	9,818	6,529	19.8	57.2	7,758	5,159				
				19.8	37.6	8,205	5,456	17.1	0.0	10,154	6,752	19.8	49.5	13,960	9,284	19.8	31.2	8,726	5,803	21.3	54.3	6,858	4,561				
				21.3	31.4	7,486	4,978					21.3	45.6	12,839	8,538	21.3	22.9	7,708	5,126	22.9	51.3	6,050	4,023				
				22.9	23.9	6,791	4,516					22.9	41.4	11,860	7,887	22.9	9.3	6,458	4,295	24.4	48.2	5,319	3,537				
				24.4	12.7	5,961	3,964					24.4	36.9	10,214	6,792	24.4	0.0	5,620	3,737	25.9	44.9	4,655	3,096				
				25.0	0.0	5,023	3,340					25.9	31.8	9,545	6,348	25.9	0.0			27.4	41.4	4,048	2,692				
												27.4	25.9	8,925	5,935	27.4	0.0			29.0	37.7	3,490	2,321				
												29.0	18.2	8,376	5,570	29.0	0.0			30.5	33.6	2,977	1,980				
												30.5	0.0	7,064	4,697	30.5	0.0			32.0	29.0	2,502	1,664				
																				33.5	23.6	2,061	1,371				
																				35.1	16.6	1,652	1,098				
																				36.6	0.0	1,269	844				

LOAD CHART CREATOR: DSHAD 12/2018 rev1.0 - Values listed subject to change without notice. - Values reflect structural capacities and may vary with configuration via client specification. Offboard denotes a default CV=2. Sea State Load Charts are available by request and in conjunction with client supplied vessel data.

Designed and Manufactured under the controls set forth

by



2C-0067

**TECHCRANE**

Techcrane Designs Previously Approved By

