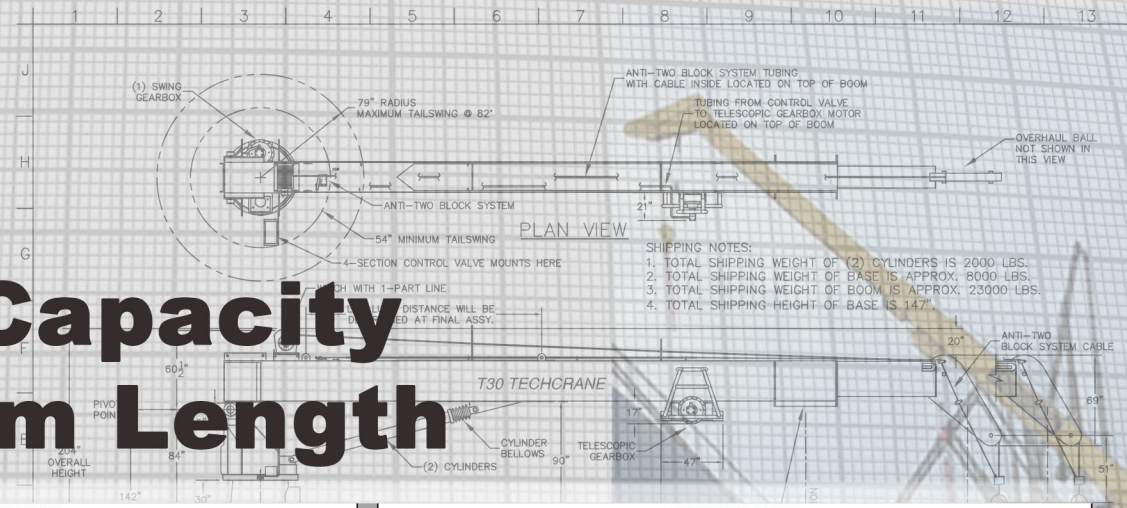


# T30

## Load Capacity By Boom Length



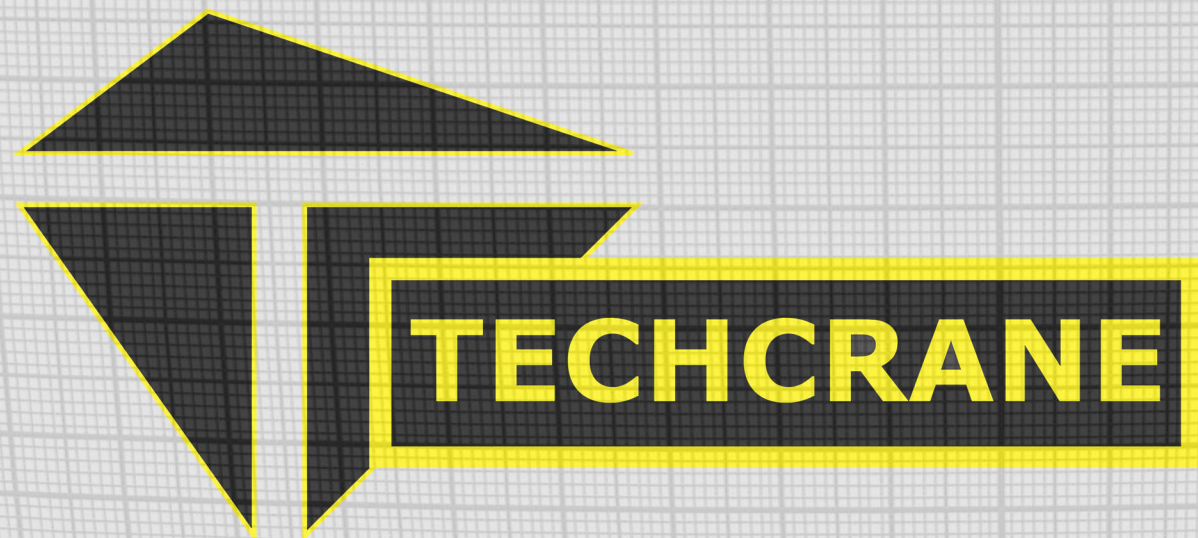
MODEL T30-25-40				MODEL T30-40-70				MODEL T30-56-100															
US UNITS: RETRACTED BOOM LENGTH: 25 (ft)				US UNITS: EXTENDED BOOM LENGTH: 40 (ft)				US UNITS: RETRACTED BOOM LENGTH: 40 (ft)				US UNITS: EXTENDED BOOM LENGTH: 70 (ft)				US UNITS: RETRACTED BOOM LENGTH: 56 (ft)				US UNITS: EXTENDED BOOM LENGTH: 100 (ft)			
REACH (ft)	ANGLE (deg)	ONBOARD LOAD (STATIC) lbs	OFFBOARD LOAD (DYNAMIC) lbs	REACH (ft)	ANGLE (deg)	ONBOARD LOAD (STATIC) lbs	OFFBOARD LOAD (DYNAMIC) lbs	REACH (ft)	ANGLE (deg)	ONBOARD LOAD (STATIC) lbs	OFFBOARD LOAD (DYNAMIC) lbs	REACH (ft)	ANGLE (deg)	ONBOARD LOAD (STATIC) lbs	OFFBOARD LOAD (DYNAMIC) lbs	REACH (ft)	ANGLE (deg)	ONBOARD LOAD (STATIC) lbs	OFFBOARD LOAD (DYNAMIC) lbs	REACH (ft)	ANGLE (deg)	ONBOARD LOAD (STATIC) lbs	OFFBOARD LOAD (DYNAMIC) lbs
4.8	79.0	40,000	26,600	7.5	79.8	40,000	26,600	7.2	79.7	40,000	26,600	13	79.3	40,000	26,600	10	79.8	40,000	26,600	18	79.7	27,058	17,993
5	78.5	40,000	26,600	10	76.3	40,000	26,600	10	75.6	40,000	26,600	15	77.7	35,662	23,715	15	74.5	32,001	21,281	20	78.5	23,368	15,540
10	66.5	37,110	24,678	15	69.1	36,330	24,159	15	68.0	35,100	23,342	20	73.4	27,400	18,221	20	69.1	25,150	16,725	25	75.6	19,527	12,986
15	53.2	32,880	21,865	20	61.6	30,000	19,950	20	60.0	30,000	19,950	25	69.1	22,475	14,946	25	63.5	17,550	11,671	30	72.6	16,639	11,065
20	36.9	30,000	19,950	25	53.5	27,725	18,437	25	51.3	27,425	18,238	30	64.7	18,825	12,519	30	57.6	15,360	10,214	35	69.5	14,384	9,565
25	0.0	26,425	17,573	30	44.4	21,750	14,464	30	41.4	20,550	13,666	35	60.0	16,050	10,673	35	51.3	12,140	8,073	40	66.5	12,577	8,364
				35	33.6	17,500	11,638	35	29.0	15,675	10,424	40	55.2	13,920	9,257	40	44.4	10,929	7,268	45	63.3	11,097	7,379
				40	17.8	14,300	9,510	40	0.0	11,825	7,864	45	50.0	12,200	8,113	45	36.5	9,423	6,266	50	60.0	9,860	6,557
				42	0.0	13,175	8,761					50	44.4	10,775	7,165	50	26.8	8,580	5,706	55	56.7	8,811	5,859
												55	38.2	9,600	6,384	55	10.8	7,565	5,031	60	53.2	7,913	5,262
												60	31.0	8,475	5,636	60	0.0	5,367	3,569	65	49.5	7,135	4,745
												65	21.8	6,975	4,638					70	45.6	6,450	4,290
												70	0.0	4,000	2,660					75	41.4	5,850	3,890
																				80	36.9	5,313	3,533
																				85	31.8	4,836	3,216
																				90	25.9	3,588	2,386
																				95	18.2	2,562	1,704
																				100	0.0	1,780	1,184

SI UNITS RETRACTED BOOM LENGTH = 7 Meters				SI UNITS EXTENDED BOOM LENGTH = 12.8 Meters				SI UNITS RETRACTED BOOM LENGTH = 12 Meters				SI UNITS EXTENDED BOOM LENGTH = 21 Meters				SI UNITS RETRACTED BOOM LENGTH = 17 Meters				SI UNITS EXTENDED BOOM LENGTH = 30 Meters			
REACH (m)	ANGLE (deg)	ONBOARD LOAD (STATIC) Kg	OFFBOARD LOAD (DYNAMIC) Kg	REACH (m)	ANGLE (deg)	ONBOARD LOAD (STATIC) Kg	OFFBOARD LOAD (DYNAMIC) Kg	REACH (m)	ANGLE (deg)	ONBOARD LOAD (STATIC) Kg	OFFBOARD LOAD (DYNAMIC) Kg	REACH (m)	ANGLE (deg)	ONBOARD LOAD (STATIC) Kg	OFFBOARD LOAD (DYNAMIC) Kg	REACH (m)	ANGLE (deg)	ONBOARD LOAD (STATIC) Kg	OFFBOARD LOAD (DYNAMIC) Kg	REACH (m)	ANGLE (deg)	ONBOARD LOAD (STATIC) Kg	OFFBOARD LOAD (DYNAMIC) Kg
1.5	79.0	18,182	12,091	2.3	79.8	18,182	12,091	2.2	79.7	18,182	12,091	4.0	79.3	18,182	12,091	3.0	79.7	18,182	12,091	5.5	79.7	12,299	8,179
1.5	78.5	18,182	12,091	3.0	76.3	18,182	12,091	3.0	75.6	18,182	12,091	4.6	77.7	16,210	10,780	4.6	74.5	14,546	9,673	6.1	78.5	10,622	7,064
3.0	66.5	16,868	11,217	4.6	69.1	16,514	10,982	4.6	68.0	15,955	10,610	6.1	73.4	12,455	8,282	6.1	69.1	11,432	7,602	7.6	75.6	8,876	5,903
4.6	53.2	14,945	9,939	6.1	61.6	13,636	9,068	6.1	60.0	13,636	9,068	7.6	69.1	10,216	6,794	7.6	63.5	7,977	5,305	9.1	72.6	7,563	5,029
6.1	36.9	13,636	9,068	7.6	53.5	12,602	8,381	7.6	51.3	12,466	8,290	9.1	64.7	8,557	5,690	9.1	57.6	6,982	4,643	10.7	69.5	6,538	4,348
7.6	0.0	12,011	7,988	9.1	44.4	9,886	6,574	9.1	41.4	9,341	6,212	10.7	60.0	7,295	4,851	10.7	51.3	5,518	3,670	12.2	66.5	5,717	3,802
				10.7	33.6	7,955	5,290	10.7	29.0	7,125	4,738	12.2	55.2	6,327	4,208	12.2	44.4	4,968	3,304	13.7	63.3	5,044	3,354
				12.2	17.8	6,500	4,323	12.2	0.0	5,375	3,574	13.7	50.0	5,545	3,688	13.7	36.5	4,283	2,848	15.2	60.0	4,482	2,981
				12.8	0.0	5,989	3,982					15.2	44.4	4,898	3,257	15.2	26.8	3,900	2,594	16.8	56.7	4,005	2,663
												16.8	38.2	4,364	2,902	16.8	10.8	3,439	2,287	18.3	53.2	3,597	2,392
												18.3	31.0	3,852	2,562	18.3	0.0	2,440	1,622	19.8	49.5	3,243	2,157
												19.8	21.8	3,170	2,108					21.3	45.6	2,932	1,950
												21.3	0.0	1,818	1,209					22.9	41.4	2,659	1,768
																				24.4	36.9	2,415	1,606
																				25.9	31.8	2,198	1,462
																				27.4	25.9	1,631	1,085
																				29.0	18.2	1,165	774
																				30.5	0.0	809	538

LOAD CHART CREATOR: DSHAD 12/2018 rev1.0 - Values listed subject to change without notice. - Values reflect structural capacities and may vary with configuration via client specification. Offboard denotes a default CV=2. Sea State Load Charts are available by request and in conjunction with client supplied vessel data.

Designed and Manufactured  
under the controls set forth



Techcrane Designs  
Previously Approved By

