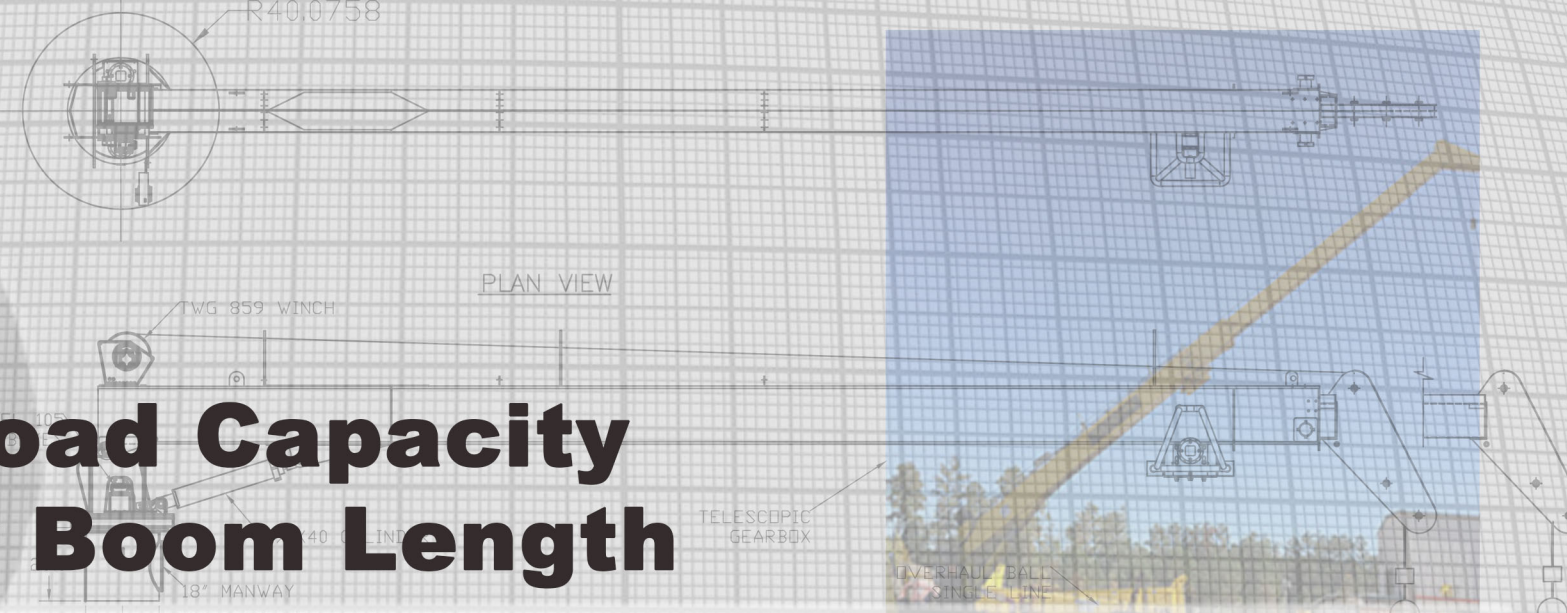


# T20

## Load Capacity By Boom Length



MODEL T20-19-30				MODEL T20-24-40				MODEL T20-33-60															
US UNITS: RETRACTED BOOM LENGTH: 19 (ft)				US UNITS: EXTENDED BOOM LENGTH 30 (ft)				US UNITS: RETRACTED BOOM LENGTH: 24 (ft)				US UNITS: EXTENDED BOOM LENGTH: 40 (ft)				US UNITS: RETRACTED BOOM LENGTH: 33 (ft)				US UNITS: EXTENDED BOOM LENGTH: 60 (ft)			
REACH (ft)	ANGLE (deg)	ONBOARD LOAD (STATIC) lbs	OFFBOARD LOAD (DYNAMIC) lbs	REACH (ft)	ANGLE (deg)	ONBOARD LOAD (STATIC) lbs	OFFBOARD LOAD (DYNAMIC) lbs	REACH (ft)	ANGLE (deg)	ONBOARD LOAD (STATIC) lbs	OFFBOARD LOAD (DYNAMIC) lbs	REACH (ft)	ANGLE (deg)	ONBOARD LOAD (STATIC) lbs	OFFBOARD LOAD (DYNAMIC) lbs	REACH (ft)	ANGLE (deg)	ONBOARD LOAD (STATIC) lbs	OFFBOARD LOAD (DYNAMIC) lbs	REACH (ft)	ANGLE (deg)	ONBOARD LOAD (STATIC) lbs	OFFBOARD LOAD (DYNAMIC) lbs
2	84.0	24,000	15,960	4	82.4	24,000	15,960	3	82.9	24,000	15,960	5	82.9	24,000	15,960	4.8	81.7	24,000	15,960	8	82.4	20,860	13,872
5	74.8	24,000	15,960	5	80.4	22,568	15,008	5	78.0	22,568	15,008	10	75.6	22,568	15,008	5	81.3	24,000	15,960	10	80.4	13,915	9,253
10	58.3	22,568	15,008	10	70.6	22,568	15,008	10	65.4	20,315	13,509	15	68.0	21,629	14,383	10	72.4	23,550	15,661	15	75.6	12,087	8,038
15	37.9	22,568	15,008	15	60.0	20,963	13,940	15	51.3	14,017	9,321	20	60.0	15,434	10,264	15	63.0	22,100	14,697	20	70.6	10,148	6,748
19	0.0	18,815	12,512	20	48.2	16,109	10,712	20	33.6	10,647	7,080	25	51.3	11,717	7,792	20	52.7	17,408	11,576	25	65.4	8,787	5,843
				25	33.6	13,072	8,693	24	0.0	9,004	5,988	30	41.4	9,240	6,145	25	40.8	12,417	8,257	30	60.0	8,209	5,459
				30	0.0	10,961	7,289					35	29.0	7,470	4,968	30	24.6	8,703	5,787	35	54.3	7,343	4,883
												40	0.0	6,142	4,084	33	0.0	6,724	4,471	40	48.2	6,064	4,033
																				45	41.4	4,455	2,963
																				50	33.6	3,383	2,250
																				55	23.6	2,393	1,591
																				60	0.0	1,485	988

SI UNITS RETRACTED BOOM LENGTH = 5.8 Meters				SI UNITS EXTENDED BOOM LENGTH = 9 Meters				SI UNITS RETRACTED BOOM LENGTH = 7 Meters				SI UNITS EXTENDED BOOM LENGTH = 12 Meters				SI UNITS RETRACTED BOOM LENGTH = 10 Meters				SI UNITS EXTENDED BOOM LENGTH = 18 Meters			
REACH (m)	ANGLE (deg)	ONBOARD LOAD (STATIC) Kg	OFFBOARD LOAD (DYNAMIC) Kg	REACH (m)	ANGLE (deg)	ONBOARD LOAD (STATIC) Kg	OFFBOARD LOAD (DYNAMIC) Kg	REACH (m)	ANGLE (deg)	ONBOARD LOAD (STATIC) Kg	OFFBOARD LOAD (DYNAMIC) Kg	REACH (m)	ANGLE (deg)	ONBOARD LOAD (STATIC) Kg	OFFBOARD LOAD (DYNAMIC) Kg	REACH (m)	ANGLE (deg)	ONBOARD LOAD (STATIC) Kg	OFFBOARD LOAD (DYNAMIC) Kg	REACH (m)	ANGLE (deg)	ONBOARD LOAD (STATIC) Kg	OFFBOARD LOAD (DYNAMIC) Kg
0.6	84.0	10,909	7,255	1.2	82.4	10,909	7,255	0.9	82.9	10,909	7,255	1.5	82.9	10,909	7,255	1.5	81.7	10,909	7,255	2.4	82.4	9,482	6,305
1.5	74.8	10,909	7,255	1.5	80.4	10,258	6,822	1.5	78.0	10,258	6,822	3.0	75.6	10,258	6,822	1.5	81.3	10,909	7,255	3.0	80.4	6,325	4,206
3.0	58.3	10,258	6,822	3.0	70.6	10,258	6,822	3.0	65.4	9,234	6,141	4.6	68.0	9,831	6,538	3.0	72.4	10,705	7,119	4.6	75.6	5,494	3,654
4.6	37.9	10,258	6,822	4.6	60.0	9,529	6,337	4.6	51.3	6,371	4,237	6.1	60.0	7,015	4,665	4.6	63.0	10,045	6,680	6.1	70.6	4,613	3,067
5.8	0.0	8,552	5,687	6.1	48.2	7,322	4,869	6.1	33.6	4,840	3,218	7.6	51.3	5,326	3,542	6.1	52.7	7,913	5,262	7.6	65.4	3,994	2,656
				7.6	33.6	5,942	3,951	7.3	0.0	4,093	2,722	9.1	41.4	4,200	2,793	7.6	40.8	5,644	3,753	9.1	60.0	3,731	2,481
				9.1	0.0	4,982	3,313					10.7	29.0	3,395	2,258	9.1	24.6	3,956	2,631	10.7	54.3	3,338	2,220
												12.2	0.0	2,792	1,857	10.1	0.0	3,056	2,032	12.2	48.2	2,756	1,833
																				13.7	41.4	2,025	1,347
																				15.2	33.6	1,538	1,023
																				16.8	23.6	1,088	723
																				18.3	0.0	675	449

LOAD CHART CREATOR: DSHAD 12/2018 rev1.0 - Values listed subject to change without notice. - Values reflect structural capacities and may vary with configuration via client specification. Offboard denotes a default CV=2. Sea State Load Charts are available by request and in conjunction with client supplied vessel data.

Designed and Manufactured  
under the controls set forth

by



2C-0067

# TECHCRANE

Techcrane Designs  
Previously Approved By

