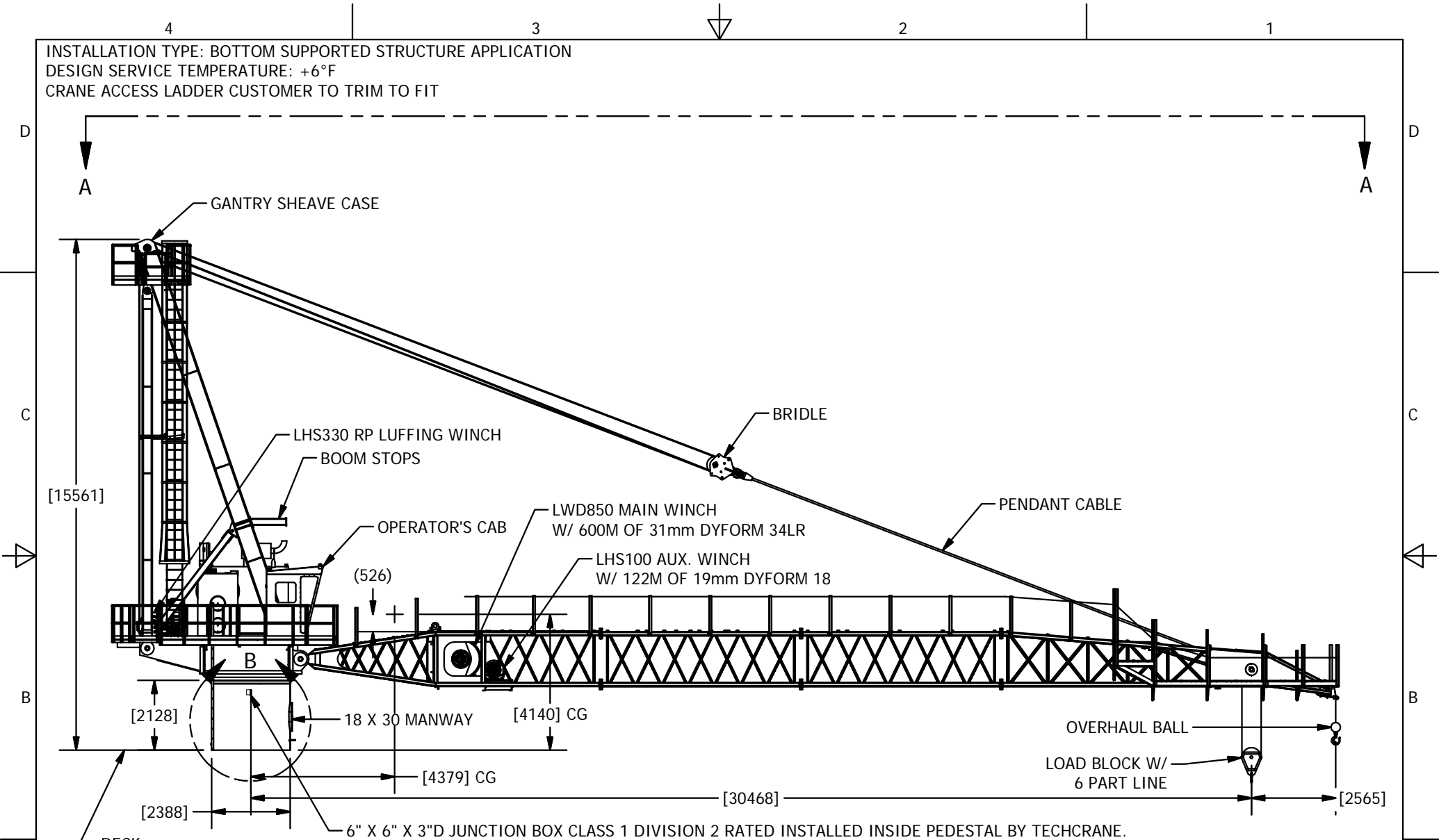


INSTALLATION TYPE: BOTTOM SUPPORTED STRUCTURE APPLICATION

DESIGN SERVICE TEMPERATURE: +6°F

CRANE ACCESS LADDER CUSTOMER TO TRIM TO FIT



6" X 6" X 3"D JUNCTION BOX CLASS 1 DIVISION 2 RATED INSTALLED INSIDE PEDESTAL BY TECHCRANE.
 POWER TO BE SUPPLIED TO JUNCTION BOX BY SHIPYARD PER THE FOLLOWING:
 THE SUPPLY FOR THE 3 PHASE MOTOR SHALL CONSIST OF 3 PHASES AND GROUND, AND WILL BE 440VAC, 60HZ, 3PH.
 THE SUPPLY FOR CABIN POWER SHALL CONSIST OF ONE LINE AND WILL BE 230VAC, 50HZ, 20A.


- Max Overturning moment 14675 kip*ft and corresponding Thrust 582 kips.
- Max thrust 748 kips and corresponding 9753 kip*ft.
- Max Dead load moment 3750 kip*ft.

INFORMATION CONTAINED HEREON IS CONFIDENTIAL AND TRADE SECRET DO NOT DISCLOSE, USE OR REPRODUCE WITHOUT PRIOR WRITTEN APPROVAL FROM TECHCRANE INTERNATIONAL LLC.

UNLESS OTHERWISE SPECIFIED ALL DIMENSIONS ARE IN INCHES [] INDICATES MILLIMETERS
TOLERANCES
 FRACTIONAL DIMENSIONS +1/16/-0 SURFACE FINISHES 125V

DESIGNED BY:	F. SHAD
DRAWN BY:	L. BAYLIS
WEIGHT:	N/A
APPROVED BY:	
FILE NAME:	01200 - SERIES BRANCH - PRODUCTION DRAWINGS - MODEL GAL200-100 SWISSCO JOB #12852.dwg

MATERIAL NOTES:	
1. BURN PER DIMENSIONS SHOWN.	
2. PLATE FLATNESS AFTER BURNING TO BE WITHIN ASTM SPECIFICATIONS.	
3. REFER TO API SPEC 2C LATEST EDITION.	
4. WHERE APPLICABLE - ROLL FORM PER DIMENSIONS SHOWN.	
5. WHERE APPLICABLE - TACK WELD AS REQUIRED TO SECURE ROLLED CAN.	
DESIGN STATE:	WorkInProgress
MATERIAL:	

 TECHCRANE INTERNATIONAL, LLC. 17639 HARD HAT DRIVE COVINGTON, LA. 70435 U.S.A. PHONE (985) 871-0056 FAX (985) 871-0065	L200-100 GENERAL ARRANGEMENT SWISSCO JOB #12852	
	DATE:	REVISION NO.:
	10/12/2015	3.3
SHEET 1 OF 4		

PART/DWG. NO.: **PRESENTATION**

4

3

2

1

D

D

C

C

B

B

A

A

C15 CAT ENGINE

[Ø10580]

[914] WIDE
FIBERGLASS GRATING
BOOM WALKWAY

OPERATOR'S CAB

CRANE ACCESS LADDER

VIEW A-A

INFORMATION CONTAINED HEREON IS
CONFIDENTIAL AND TRADE SECRET
DO NOT DISCLOSE, USE OR REPRODUCE
WITHOUT PRIOR WRITTEN APPROVAL
FROM TECHCRANE INTERNATIONAL LLC.

DESIGNED BY:
F. SHAD

DRAWN BY:
L. BAYLIS

WEIGHT:
N/A

APPROVED BY:

FILE NAME:
01200 - SERIES DRAMES4 - PRODUCTION DRAWINGS - MODEL GAL200-100 SWISSCO JOB #12852.dwg

MATERIAL NOTES:
1. BURN PER DIMENSIONS SHOWN.
2. PLATE FLATNESS AFTER BURNING TO BE
WITHIN ASTM SPECIFICATIONS.
3. REFER TO API SPEC 2C LATEST EDITION
4. WHERE APPLICABLE - ROLL FORM PER
DIMENSIONS SHOWN.
5. WHERE APPLICABLE - TACK WELD AS
REQUIRED TO SECURE ROLLED CAN.

DESIGN STATE:
WorkInProgress

MATERIAL:



TECHCRANE INTERNATIONAL, LLC.

17639 HARD HAT DRIVE COVINGTON, LA. 70435 U.S.A.
PHONE (985) 871-0056 FAX (985) 871-0065

**L200-100 GENERAL ARRANGEMENT
SWISSCO JOB #12852**

DATE:
10/12/2015

REVISION NO.:
3.3

SHEET 2 OF 4

PART/DWG. NO.:

PRESENTATION

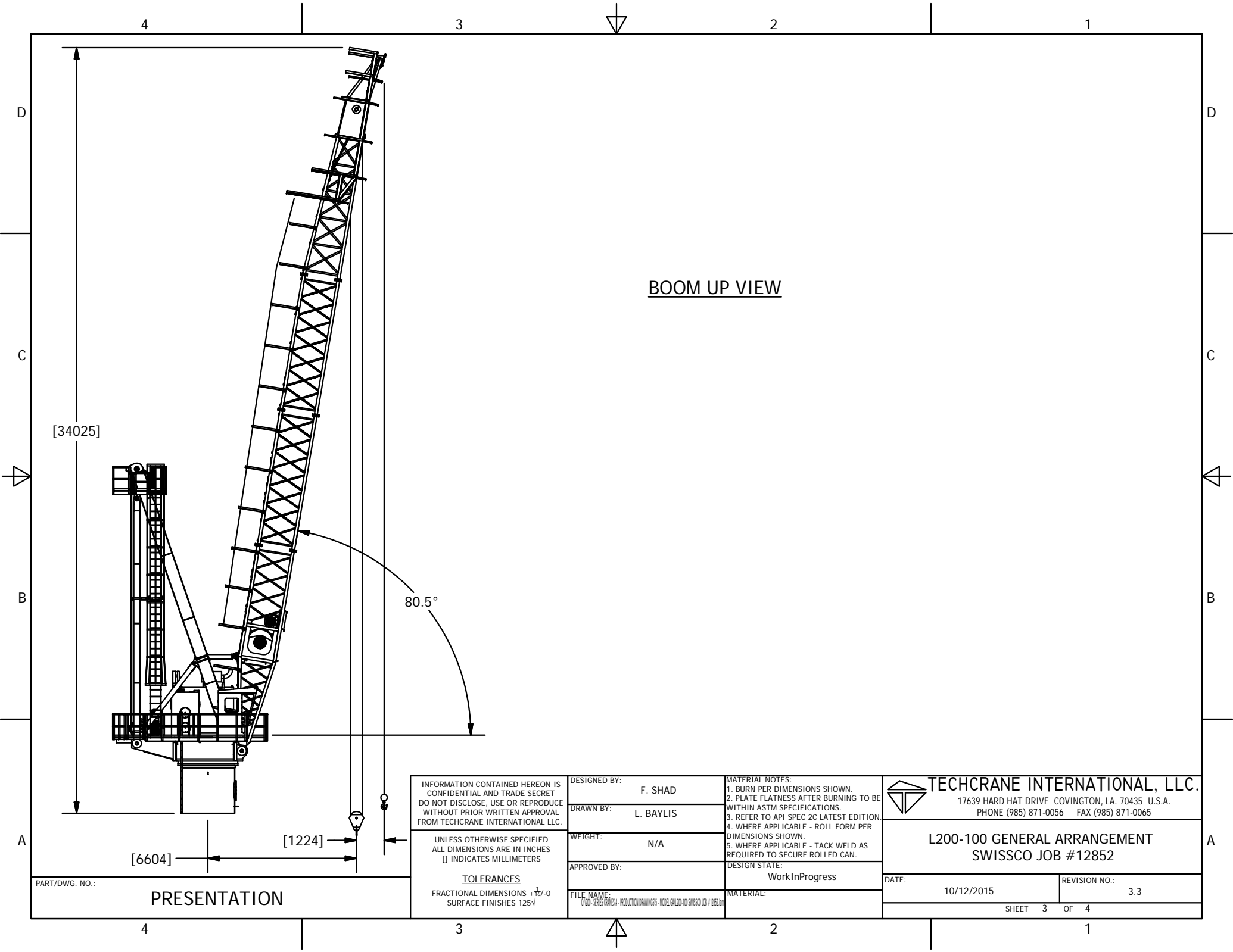
4

3

2

1





BOOM UP VIEW

[34025]

80.5°

[6604]

[1224]

INFORMATION CONTAINED HEREON IS
CONFIDENTIAL AND TRADE SECRET
DO NOT DISCLOSE, USE OR REPRODUCE
WITHOUT PRIOR WRITTEN APPROVAL
FROM TECHCRANE INTERNATIONAL LLC.

UNLESS OTHERWISE SPECIFIED
ALL DIMENSIONS ARE IN INCHES
[] INDICATES MILLIMETERS

TOLERANCES
FRACTIONAL DIMENSIONS $\pm \frac{1}{16} / -0$
SURFACE FINISHES 125V

DESIGNED BY:
F. SHAD

DRAWN BY:
L. BAYLIS

WEIGHT:
N/A

APPROVED BY:

FILE NAME:
01200 - SERIES DRAMES4 - PRODUCTION DRAWINGS - MODEL GAL200-100 SWISSCO JOB #12852.dwg

MATERIAL NOTES:
1. BURN PER DIMENSIONS SHOWN.
2. PLATE FLATNESS AFTER BURNING TO BE
WITHIN ASTM SPECIFICATIONS.
3. REFER TO API SPEC 2C LATEST EDITION.
4. WHERE APPLICABLE - ROLL FORM PER
DIMENSIONS SHOWN.
5. WHERE APPLICABLE - TACK WELD AS
REQUIRED TO SECURE ROLLED CAN.

DESIGN STATE:
WorkInProgress

MATERIAL:

 **TECHCRANE INTERNATIONAL, LLC.**
17639 HARD HAT DRIVE COVINGTON, LA. 70435 U.S.A.
PHONE (985) 871-0056 FAX (985) 871-0065

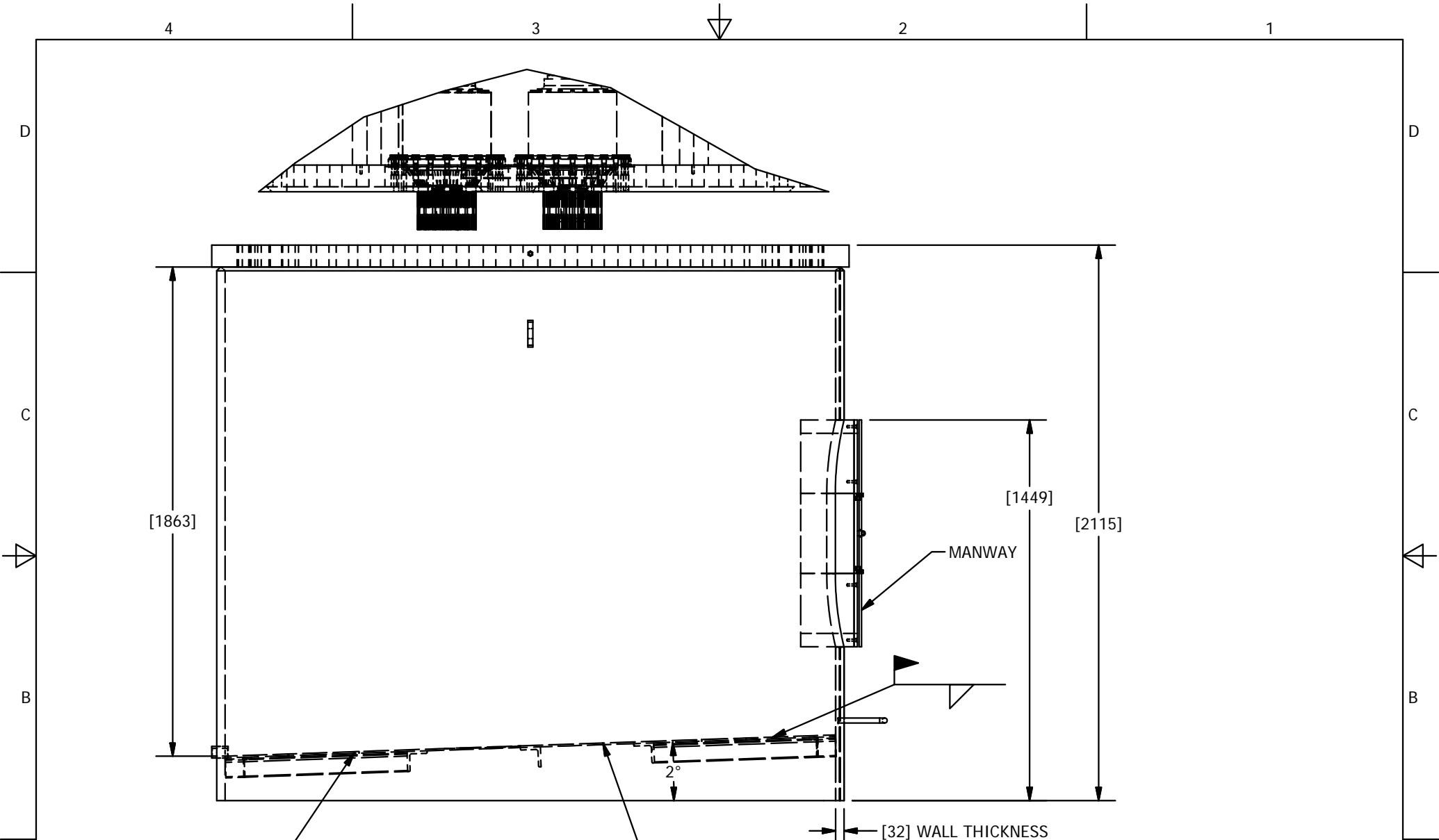
L200-100 GENERAL ARRANGEMENT
SWISSCO JOB #12852

DATE:
10/12/2015

REVISION NO.:
3.3

PART/DWG. NO.:

PRESENTATION



BAFFLE IS SOLID
NO PASS THROUGH

DETAIL B
APPROX. PEDESTAL WEIGHT = 11850 LBS

INTERIOR BAFFLE

MANWAY

[32] WALL THICKNESS

INFORMATION CONTAINED HEREON IS
CONFIDENTIAL AND TRADE SECRET
DO NOT DISCLOSE, USE OR REPRODUCE
WITHOUT PRIOR WRITTEN APPROVAL
FROM TECHCRANE INTERNATIONAL LLC.

UNLESS OTHERWISE SPECIFIED
ALL DIMENSIONS ARE IN INCHES
[] INDICATES MILLIMETERS

TOLERANCES
FRACTIONAL DIMENSIONS $+1/16/-0$
SURFACE FINISHES 125V

DESIGNED BY:
F. SHAD

DRAWN BY:
L. BAYLIS

WEIGHT:
N/A

APPROVED BY:

FILE NAME:
0100 - SERIES DRAWS - PRODUCTION DRAWINGS - MODEL GAL200-100 SWISSCO JOB #12852.dwg

MATERIAL NOTES:
1. BURN PER DIMENSIONS SHOWN.
2. PLATE FLATNESS AFTER BURNING TO BE
WITHIN ASTM SPECIFICATIONS.
3. REFER TO API SPEC 2C LATEST EDITION
4. WHERE APPLICABLE - ROLL FORM PER
DIMENSIONS SHOWN.
5. WHERE APPLICABLE - TACK WELD AS
REQUIRED TO SECURE ROLLED CAN.

DESIGN STATE:
WorkInProgress

MATERIAL:

TECHCRANE INTERNATIONAL, LLC.
17639 HARD HAT DRIVE COVINGTON, LA. 70435 U.S.A.
PHONE (985) 871-0056 FAX (985) 871-0065

L200-100 GENERAL ARRANGEMENT
SWISSCO JOB #12852

DATE:
10/12/2015

REVISION NO.:
3.3

SHEET 4 OF 4

PART/DWG. NO.:
PRESENTATION