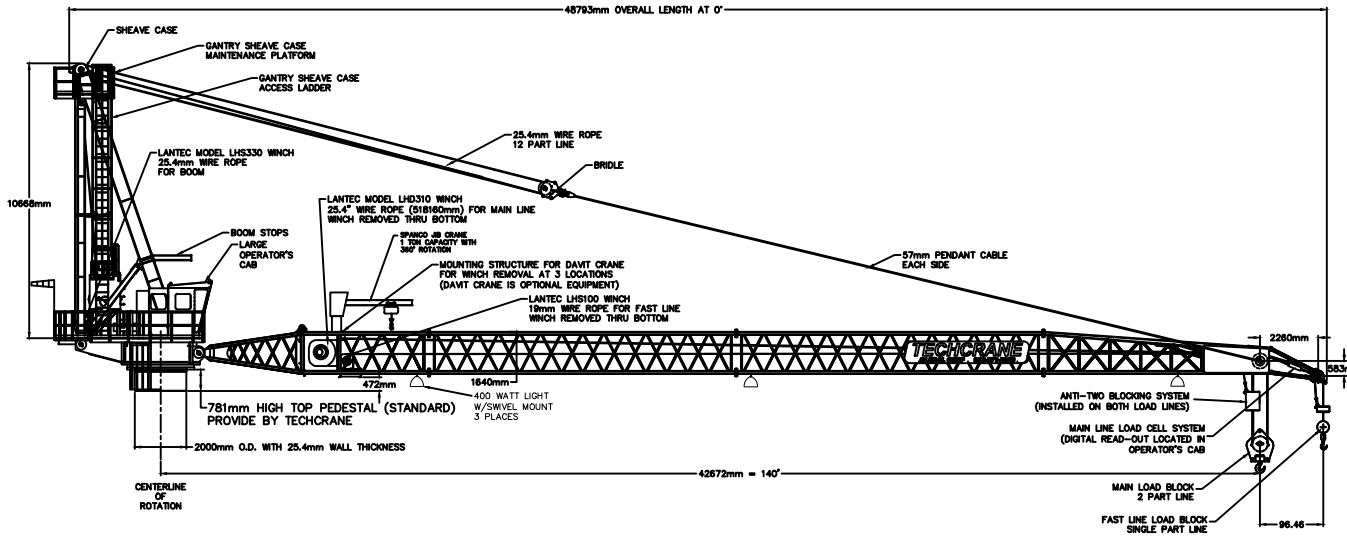


- NOTES:
- TECHCRANE MARINE CRANE MODEL HUMBER L120-140.
  - BASIC CRANE LIFTING CAPACITIES ARE AS FOLLOWS:  
 MAIN FALL  
 OFFBOARD- 2.0m SIGNIFICANT WAVE HEIGHT (Hsig)  
 10 METRIC TONNES AT 12m OUTREACH  
 3.2 METRIC TONNES AT 30m OUTREACH  
 ONBOARD  
 10 METRIC TONNES AT 20m OUTREACH  
 5 METRIC TONNES AT 30m OUTREACH  
 AUXILIARY FALL  
 OFFBOARD- 2.0m SIGNIFICANT WAVE HEIGHT (Hsig)  
 3.0 METRIC TONNES CARGO AT ALL OUTREACHES  
 1.0 METRIC TONNES PERSONNEL AT ALL OUREACHES
  - CRANE LIFTING CAPACITIES ARE BASED ON THE FOLLOWING CUSTOMER REQUIREMENTS.  
 API SPECIFICATION 2C, 6th EDITION  
 2.0 METER SIGNIFICANT WAVE HEIGHT (Hsig)  
 MINIMUM DYNAMIC FACTOR (Cv) OF 2.0 FOR OFFBOARD LIFTS  
 AND 1.33 FOR ONBOARD LIFTS  
 MINIMUM COMBINATION OF OFF LEAD/SIDE LEAD:  
 4/8° AND 8/4°  
 CRANE ACCELERATIONS:  
 VERTICAL: 1.00g  
 HORIZONTAL: 0.00g  
 PLATFORM STATIC INCLINATIONS:  
 0.5° HEEL  
 0.5° TRIM  
 17.9 m/sec OPERATIONAL WIND SPEED
  - TOTAL CRANE WEIGHT IS APPROXIMATELY 7KG
  - CRANE FOUNDATION REACTIONS PER API SPECIFICATION 2C REQUIREMENTS ARE FOLLOWS:  
 AXIL LOAD: 770 kN  
 RADIAL LOAD: 70 kN  
 OVERTURNING MOMENT: 6,800 kN-m  
 SLEWING TORQUE: 700 kN-m
  - CRANE PERFORMANCE PARAMETERS ARE:  
 HOISTING:  
 MAIN FALL (2 PART RIGGING):  
 10 METRIC TONNES AT 28 m/min  
 5 METRIC TONNES AT 50 m/min  
 AUXILIARY FALL (1 PART RIGGING):  
 3.0 METRIC TONS AT 72 m/min  
 SWING: 1.0 RPM AT MAXIMUM STATIC INCLINATION  
 LUFFING: 0° TO 80° IN 90 SECONDES AT MAXIMUM CAPACITY
  - ELECTRICAL POWER REQUIREMENTS ARE:  
 CRANE LIGHTING AND HVAC UNIT:  
 400 VAC 3 PHASE AT 50 Hz  
 230 VAC SINGLE PHASE AT 50 Hz
  - PRIME MOVER:  
 MARINE DIESEL ENGINE RATED 260 HP @ 2100 RPM
  - CRANE PEDESTAL (INCLUDING ALL LIGHTING) AND BOOM (INCLUDING FLOOD LIGHTS, HELICOPTER WARNING LIGHTS, ANTI-2-BLOCK AND LOAD PINS) ARE SUITABLE FOR OPERATION IN ZONE 2 HAZARDOUS LOCATIONS. REMAINDER OF CRANE SUITABLE FOR OPERATION IN SAFE AREA.



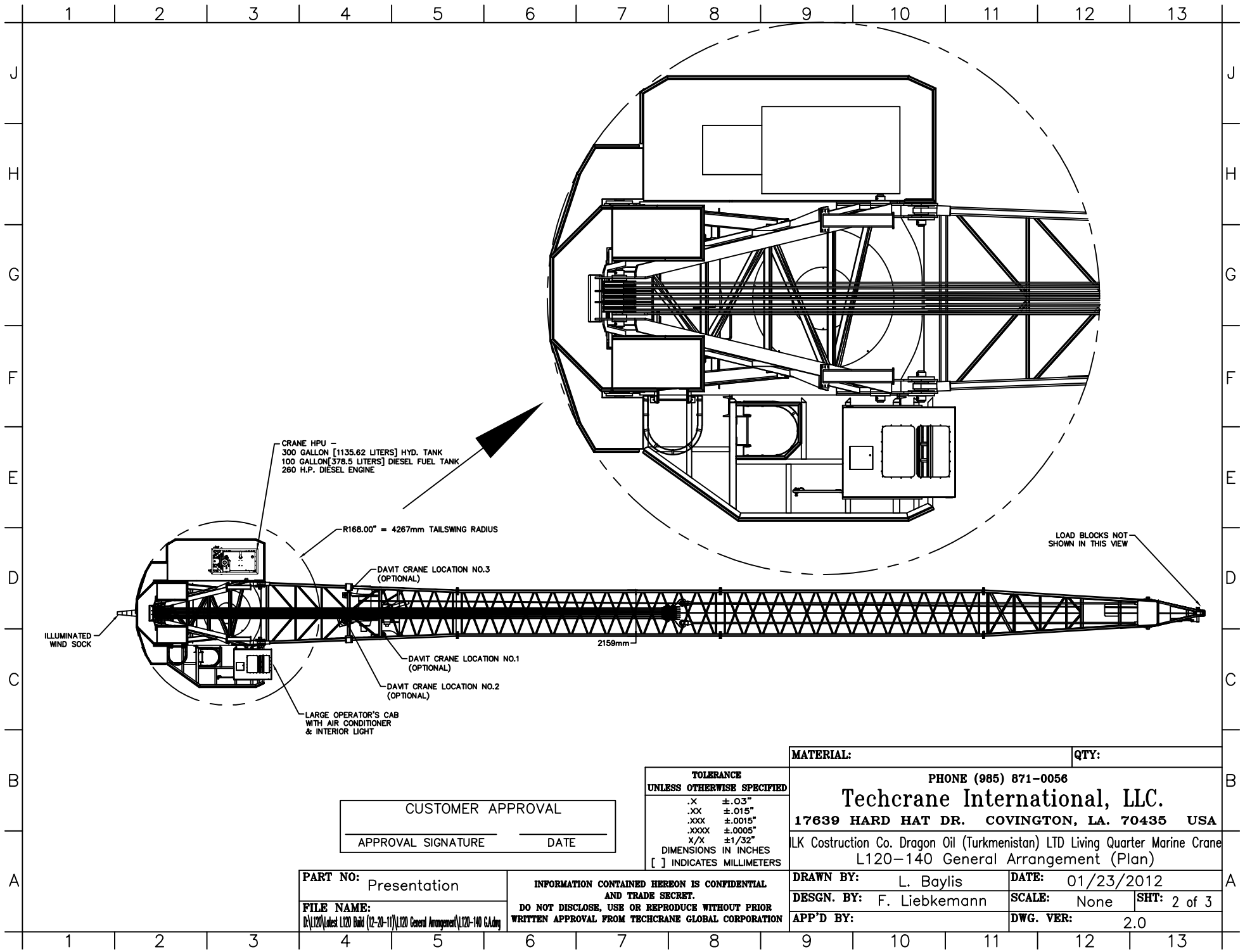
CUSTOMER APPROVAL

\_\_\_\_\_  
APPROVAL SIGNATURE                      DATE

TOLERANCE UNLESS OTHERWISE SPECIFIED	
.X	±.03"
.XX	±.015"
.XXX	±.0015"
.XXXX	±.0005"
X/X	±1/32"
DIMENSIONS IN INCHES	
[ ]	INDICATES MILLIMETERS

<b>MATERIAL:</b>	<b>QTY:</b>
PHONE (985) 871-0056	
<b>Techcrane International, LLC.</b>	
<b>17639 HARD HAT DR. COVINGTON, LA. 70435 USA</b>	
LK Costruction Co. Dragon Oil (Turkmenistan) LTD Living Quarter Marine Crane (Right Side Elevation View)	

<b>PART NO:</b> Presentation	<b>INFORMATION CONTAINED HEREBON IS CONFIDENTIAL AND TRADE SECRET. DO NOT DISCLOSE, USE OR REPRODUCE WITHOUT PRIOR WRITTEN APPROVAL FROM TECHCRANE GLOBAL CORPORATION</b>	<b>DRAWN BY:</b> L. Baylis	<b>DATE:</b> 01/23/2012
<b>FILE NAME:</b> D:\L120\Latest L120 Build (12-20-11)\L120 General Arrangement\L120-140 GA.dwg		<b>DESGN. BY:</b> F. Liebkemann	<b>SCALE:</b> None
		<b>APP'D BY:</b>	<b>DWG. VER:</b> 2.0



CRANE HPU -  
 300 GALLON [1135.62 LITERS] HYD. TANK  
 100 GALLON [378.5 LITERS] DIESEL FUEL TANK  
 260 H.P. DIESEL ENGINE

R168.00" = 4267mm TAILSWING RADIUS

DAVIT CRANE LOCATION NO.3  
 (OPTIONAL)

DAVIT CRANE LOCATION NO.1  
 (OPTIONAL)

DAVIT CRANE LOCATION NO.2  
 (OPTIONAL)

LARGE OPERATOR'S CAB  
 WITH AIR CONDITIONER  
 & INTERIOR LIGHT

ILLUMINATED  
 WIND SOCK

2159mm

LOAD BLOCKS NOT  
 SHOWN IN THIS VIEW

CUSTOMER APPROVAL

\_\_\_\_\_  
 APPROVAL SIGNATURE      DATE

TOLERANCE UNLESS OTHERWISE SPECIFIED	
.X	±.03"
.XX	±.015"
.XXX	±.0015"
.XXXX	±.0005"
X/X	±1/32"
DIMENSIONS IN INCHES	
[ ]	INDICATES MILLIMETERS

MATERIAL: \_\_\_\_\_ QTY: \_\_\_\_\_

PHONE (985) 871-0056  
**Techcrane International, LLC.**  
 17639 HARD HAT DR. COVINGTON, LA. 70435 USA

LK Costruction Co. Dragon Oil (Turkmenistan) LTD Living Quarter Marine Crane  
 L120-140 General Arrangement (Plan)

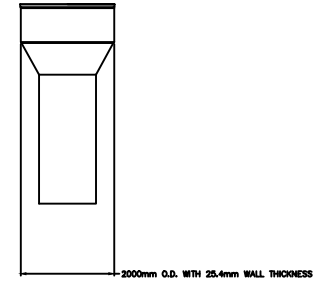
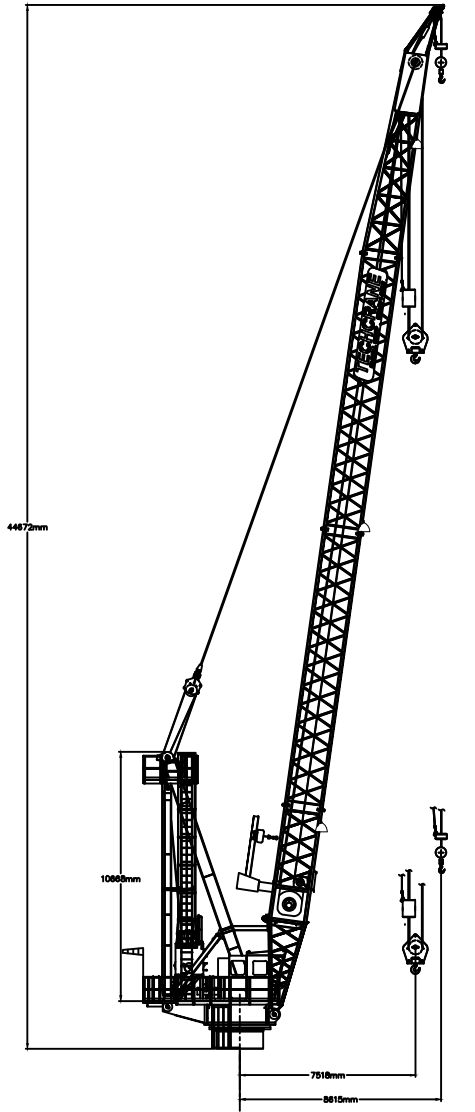
PART NO: Presentation  
 FILE NAME:  
 D:\L120\Latest L120 Build (12-20-11)\L120 General Arrangement\L120-140 GA.dwg

INFORMATION CONTAINED HEREON IS CONFIDENTIAL  
 AND TRADE SECRET.  
 DO NOT DISCLOSE, USE OR REPRODUCE WITHOUT PRIOR  
 WRITTEN APPROVAL FROM TECHCRANE GLOBAL CORPORATION

DRAWN BY: L. Baylis      DATE: 01/23/2012  
 DESGN. BY: F. Liebkemann      SCALE: None      SHT: 2 of 3  
 APP'D BY: \_\_\_\_\_      DWG. VER: 2.0

1 2 3 4 5 6 7 8 9 10 11 12 13

J  
H  
G  
F  
E  
D  
C  
B  
A



PEDESTAL DETAIL

CUSTOMER APPROVAL  
 \_\_\_\_\_  
 APPROVAL SIGNATURE                      DATE

TOLERANCE UNLESS OTHERWISE SPECIFIED	
.X	±.03"
.XX	±.015"
.XXX	±.0015"
.XXXX	±.0005"
X/X	±1/32"
DIMENSIONS IN INCHES	
[ ]	INDICATES MILLIMETERS

<b>MATERIAL:</b>		<b>QTY:</b>	
PHONE (985) 871-0056 <b>Techcrane International, LLC.</b> 17639 HARD HAT DR. COVINGTON, LA. 70435 USA LK Costruction Co. Dragon Oil (Turkmenistan) LTD Living Quarter Marine Crane (Boom-Up View)			

**PART NO:** Presentation  
**FILE NAME:**  
 D:\L120\Latest L120 Build (12-20-11)\L120 General Arrangement\L120-140 GA.dwg

INFORMATION CONTAINED HEREON IS CONFIDENTIAL AND TRADE SECRET.  
 DO NOT DISCLOSE, USE OR REPRODUCE WITHOUT PRIOR WRITTEN APPROVAL FROM TECHCRANE GLOBAL CORPORATION

<b>DRAWN BY:</b> L. Baylis	<b>DATE:</b> 01/23/2012
<b>DESGN. BY:</b> F. Liebkemann	<b>SCALE:</b> None <b>SHT:</b> 3 of 3
<b>APP'D BY:</b>	<b>DWG. VER:</b> 2.0

1 2 3 4 5 6 7 8 9 10 11 12 13