

4

3

2

1

D

D

C

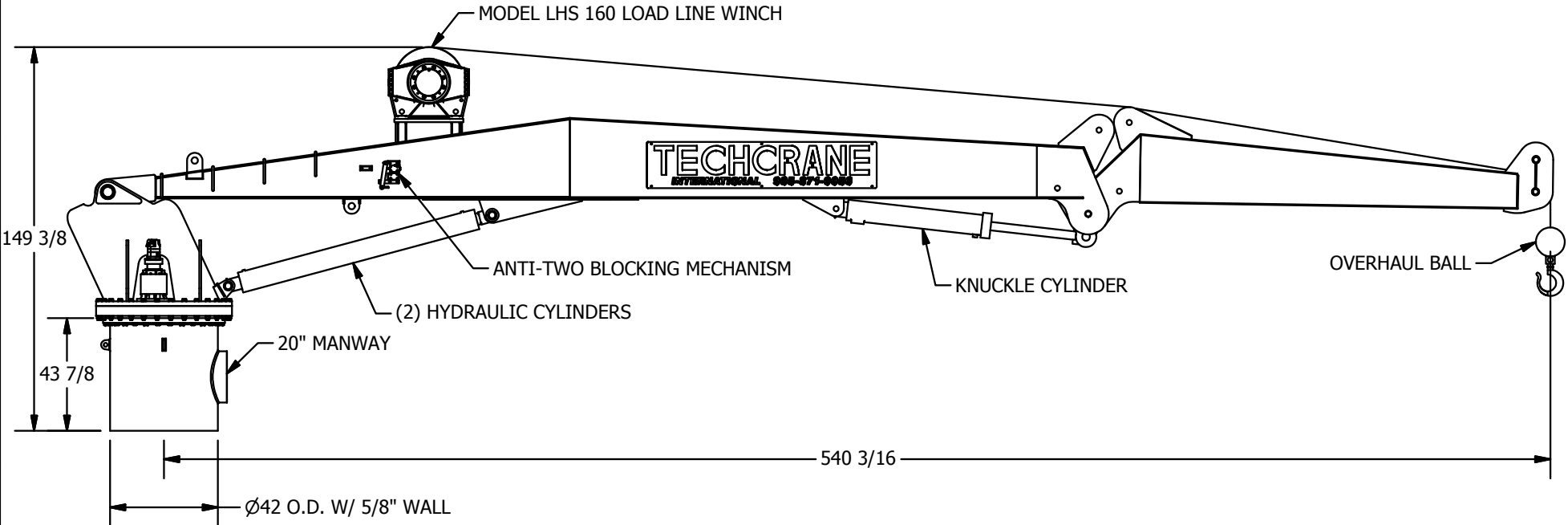
C

B

B

A

A



INFORMATION CONTAINED HEREON IS
CONFIDENTIAL AND TRADE SECRET
DO NOT DISCLOSE, USE OR REPRODUCE
WITHOUT PRIOR WRITTEN APPROVAL
FROM TECHCRANE INTERNATIONAL LLC.

UNLESS OTHERWISE SPECIFIED
ALL DIMENSIONS ARE IN INCHES
() INDICATES MILLIMETERS
TOLERANCES
FRACTIONAL DIMENSIONS +.01/-0
SURFACE FINISHES 125√

FILE NAME:
C:\WORK\DESIGN\0 R&D\K SERIES\K30-3015-00 GENERAL ARRANGEMENT.dwg

DESIGNED BY:
F. SHAD

DRAWN BY:
lbaylis

WEIGHT:
16909 lbmass

APPROVED BY:
SEE APPROVAL STAMP

DESIGN STATE:
WorkInProgress

MATERIAL NOTES:
1. ALL NDE TO BE IN ACCORDANCE AND
CALIBRATED TO AWS D1.1.
2. BURN PER DIMENSIONS SHOWN.
3. PLATE FLATNESS AFTER BURNING TO BE
WITHIN ASTM SPECIFICATIONS.
4. REFER TO API SPEC 2C LATEST EDITION.
5. WHERE APPLICABLE - ROLL FORM PER
DIMENSIONS SHOWN.
6. WHERE APPLICABLE - TACK WELD AS
REQUIRED TO SECURE ROLLED CAN.

MATERIAL:

TECHCRANE INTERNATIONAL, LLC.
17639 HARD HAT DRIVE COVINGTON, LA. 70435 U.S.A.
PHONE (985) 871-0056 FAX (985) 871-0065

K30-45 GENERAL ARRANGEMENT

DATE: 3/3/2017

REVISION NO.: 3.0

CO NO.:

SHEET 1 OF 4

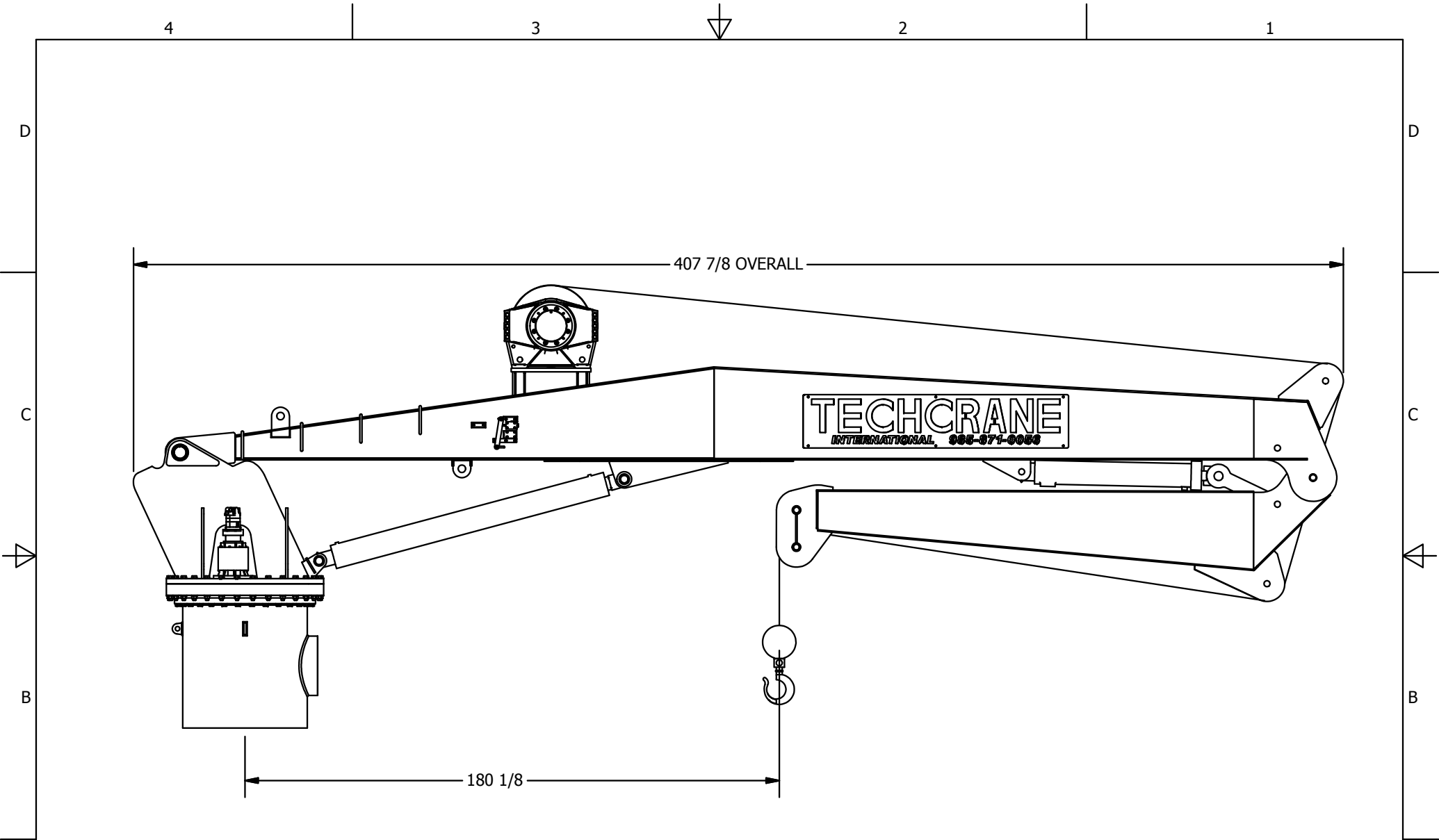
PART/DWG. NO.:
K30-3015-00-GA

4


3

2

1



INFORMATION CONTAINED HEREON IS CONFIDENTIAL AND TRADE SECRET DO NOT DISCLOSE, USE OR REPRODUCE WITHOUT PRIOR WRITTEN APPROVAL FROM TECHCRANE INTERNATIONAL LLC. UNLESS OTHERWISE SPECIFIED ALL DIMENSIONS ARE IN INCHES () INDICATES MILLIMETERS TOLERANCES FRACTIONAL DIMENSIONS $+ \frac{.015}{-0}$ SURFACE FINISHES 125√ FILE NAME: C:\Work\DESIGN\0 R&D\K SERIES\K30-3015-00 GENERAL ARRANGEMENT.dwg	DESIGNED BY: F. SHAD	MATERIAL NOTES: 1. ALL NDE TO BE IN ACCORDANCE AND CALIBRATED TO AWS D1.1. 2. BURN PER DIMENSIONS SHOWN. 3. PLATE FLATNESS AFTER BURNING TO BE WITHIN ASTM SPECIFICATIONS. 4. REFER TO API SPEC 2C LATEST EDITION. 5. WHERE APPLICABLE - ROLL FORM PER DIMENSIONS SHOWN. 6. WHERE APPLICABLE - TACK WELD AS REQUIRED TO SECURE ROLLED CAN.
	DRAWN BY: lbaylis	
	WEIGHT: 16909 lbmass	
	APPROVED BY: SEE APPROVAL STAMP	
	DESIGN STATE: WorkInProgress	MATERIAL:

TECHCRANE INTERNATIONAL, LLC.  17639 HARD HAT DRIVE COVINGTON, LA. 70435 U.S.A. PHONE (985) 871-0056 FAX (985) 871-0065		
K30-45 GENERAL ARRANGEMENT		
DATE: 3/3/2017	REVISION NO.: 3.0	CO NO.:
SHEET 2 OF 4		

PART/DWG. NO.:
K30-3015-00-GA

4

3

2

1

D

D

C

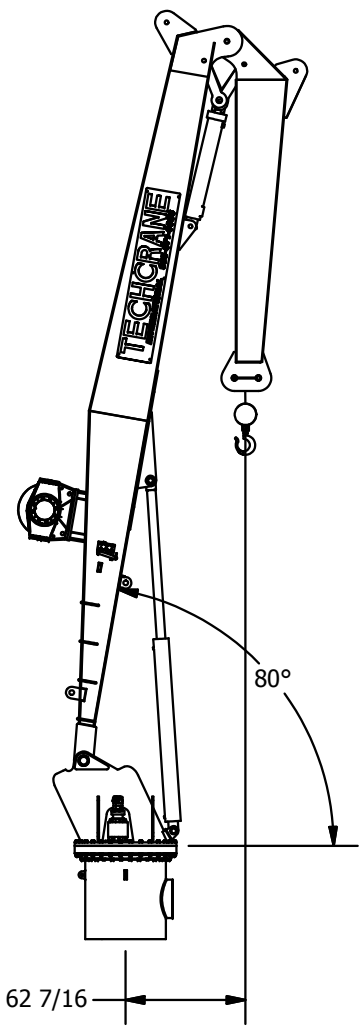
C

B


B

A

A



INFORMATION CONTAINED HEREON IS CONFIDENTIAL AND TRADE SECRET DO NOT DISCLOSE, USE OR REPRODUCE WITHOUT PRIOR WRITTEN APPROVAL FROM TECHCRANE INTERNATIONAL LLC.	DESIGNED BY: F. SHAD	MATERIAL NOTES: 1. ALL NDE TO BE IN ACCORDANCE AND CALIBRATED TO AWS D1.1. 2. BURN PER DIMENSIONS SHOWN. 3. PLATE FLATNESS AFTER BURNING TO BE WITHIN ASTM SPECIFICATIONS. 4. REFER TO API SPEC 2C LATEST EDITION. 5. WHERE APPLICABLE - ROLL FORM PER DIMENSIONS SHOWN. 6. WHERE APPLICABLE - TACK WELD AS REQUIRED TO SECURE ROLLED CAN.
	DRAWN BY: l baylis	
	WEIGHT: 16936 lbmass	
	APPROVED BY: SEE APPROVAL STAMP	
UNLESS OTHERWISE SPECIFIED ALL DIMENSIONS ARE IN INCHES () INDICATES MILLIMETERS TOLERANCES FRACTIONAL DIMENSIONS $+ \frac{.015}{-0}$ SURFACE FINISHES 125√	DESIGN STATE: WorkInProgress	MATERIAL:
FILE NAME: C:\Work\DESIGN\0 R&D\K SERIES\K30-3015-00 GENERAL ARRANGEMENT.dwg		

 TECHCRANE INTERNATIONAL, LLC. 17639 HARD HAT DRIVE COVINGTON, LA. 70435 U.S.A. PHONE (985) 871-0056 FAX (985) 871-0065		
K30-45 GENERAL ARRANGEMENT		
DATE: 3/3/2017	REVISION NO.: 3.0	CO NO.:
SHEET 3 OF 4		

PART/DWG. NO.:
K30-3015-00-GA

4

3

2

1

4

3

2

1

D

D

C

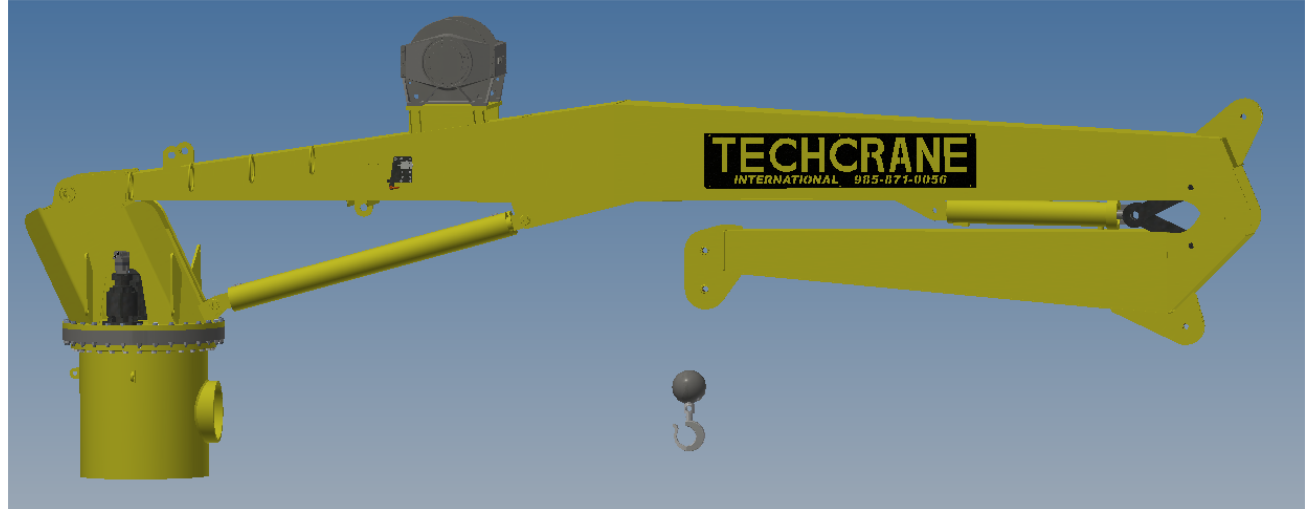
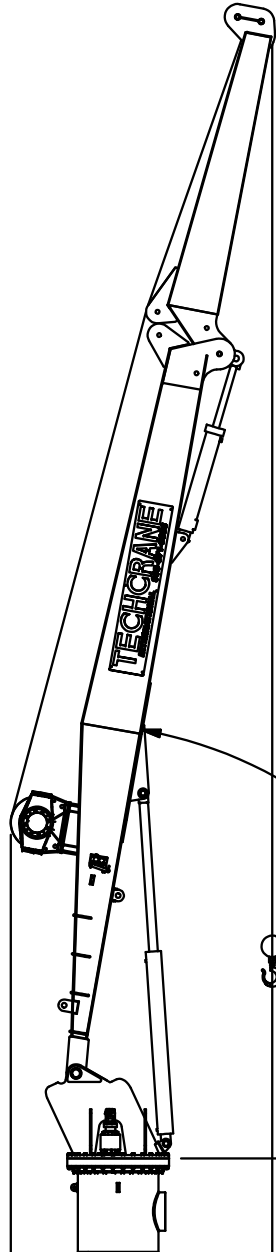
C

B

B

A

A



80°

STOWED POSITION

PART/DWG. NO.:

K30-3015-00-GA

INFORMATION CONTAINED HEREON IS
 CONFIDENTIAL AND TRADE SECRET
 DO NOT DISCLOSE, USE OR REPRODUCE
 WITHOUT PRIOR WRITTEN APPROVAL
 FROM TECHCRANE INTERNATIONAL LLC.

UNLESS OTHERWISE SPECIFIED
 ALL DIMENSIONS ARE IN INCHES
 () INDICATES MILLIMETERS
TOLERANCES

FRACTIONAL DIMENSIONS $+ \frac{1}{16} / -0$
 SURFACE FINISHES 125√

FILE NAME:
 C:\Work\DESIGN\810 R&D\K SERIES\K30-3015-00 GENERAL ARRANGEMENT.dwg

DESIGNED BY:

F. SHAD

DRAWN BY:

lbaylis

WEIGHT:

16909 lbmass

APPROVED BY:

SEE APPROVAL STAMP

DESIGN STATE:

WorkInProgress

MATERIAL NOTES:

1. ALL NDE TO BE IN ACCORDANCE AND CALIBRATED TO AWS D1.1.
2. BURN PER DIMENSIONS SHOWN.
3. PLATE FLATNESS AFTER BURNING TO BE WITHIN ASTM SPECIFICATIONS.
4. REFER TO API SPEC 2C LATEST EDITION.
5. WHERE APPLICABLE - ROLL FORM PER DIMENSIONS SHOWN.
6. WHERE APPLICABLE - TACK WELD AS REQUIRED TO SECURE ROLLED CAN.

MATERIAL:



TECHCRANE INTERNATIONAL, LLC.

17639 HARD HAT DRIVE COVINGTON, LA. 70435 U.S.A.
 PHONE (985) 871-0056 FAX (985) 871-0065

K30-45 GENERAL ARRANGEMENT

DATE:

3/3/2017

REVISION NO.:

3.0

CO NO.:

SHEET 3 OF 4

4

3

2

1

↑