

4

3

2

1

D

D

C

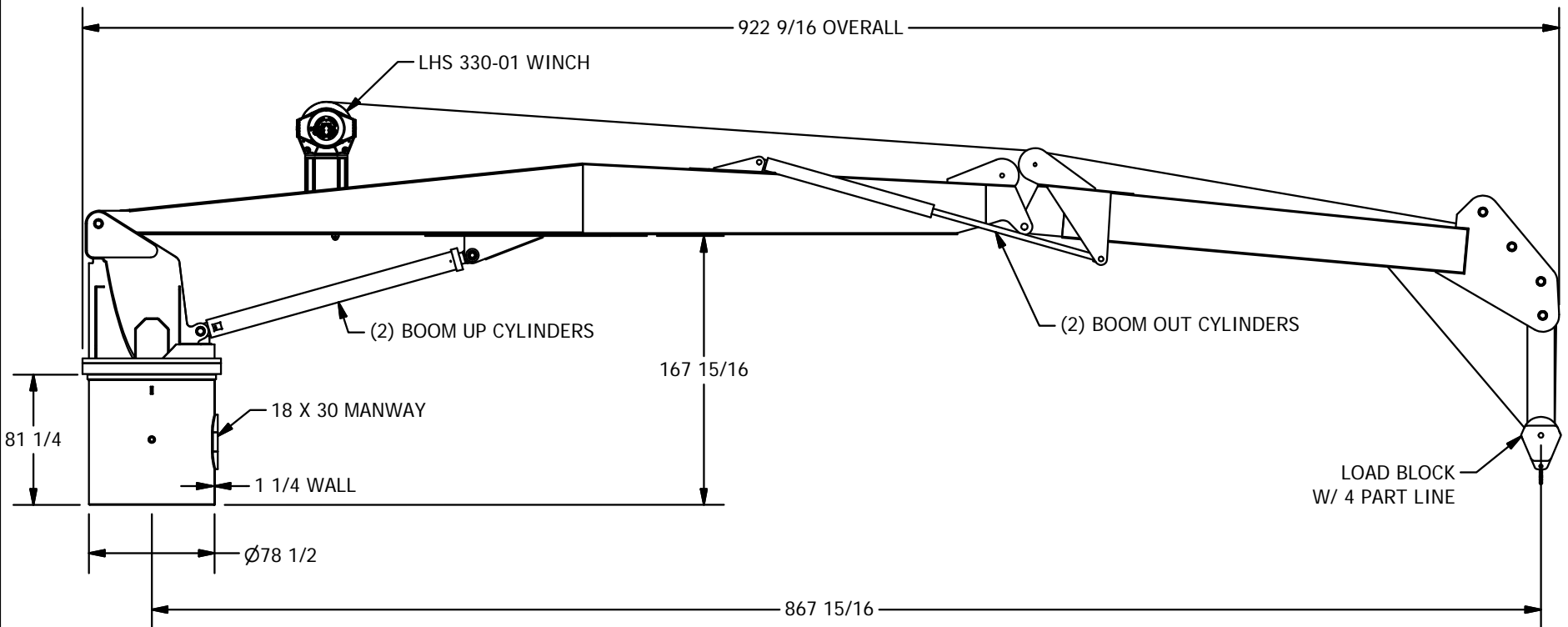
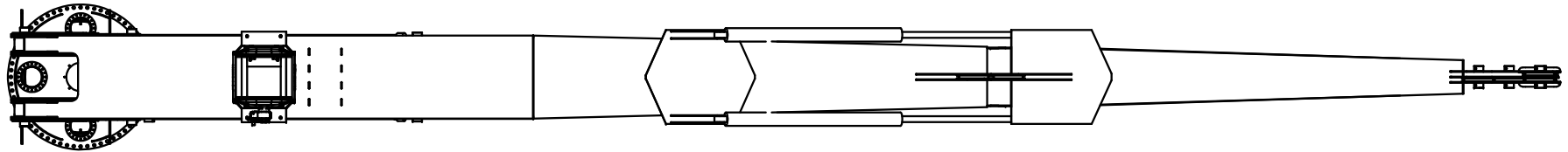
C

B


B

A

A



INFORMATION CONTAINED HEREON IS CONFIDENTIAL AND TRADE SECRET DO NOT DISCLOSE, USE OR REPRODUCE WITHOUT PRIOR WRITTEN APPROVAL FROM TECHCRANE INTERNATIONAL LLC. UNLESS OTHERWISE SPECIFIED ALL DIMENSIONS ARE IN INCHES [] INDICATES MILLIMETERS TOLERANCES FRACTIONAL DIMENSIONS +1/16/-0 SURFACE FINISHES 125V	DESIGNED BY:	F. SHAD	MATERIAL NOTES: 1. BURN PER DIMENSIONS SHOWN. 2. PLATE FLATNESS AFTER BURNING TO BE WITHIN ASTM SPECIFICATIONS. 3. REFER TO API SPEC 2C LATEST EDITION. 4. WHERE APPLICABLE - ROLL FORM PER DIMENSIONS SHOWN. 5. WHERE APPLICABLE - TACK WELD AS REQUIRED TO SECURE ROLLED CAN.
	DRAWN BY:	lbaylis	
	WEIGHT:	62066 lbmass	
	APPROVED BY:	SEE APPROVAL STAMP	
	FILE NAME:	C:\WORK\DESIGN\11 PARTS\300 BOOM\K SERIES PRELIMINARY\K120 ASSY.dwg	
	DESIGN STATE:	WorkInProgress	

TECHCRANE INTERNATIONAL, LLC.  17639 HARD HAT DRIVE COVINGTON, LA. 70435 U.S.A. PHONE (985) 871-0056 FAX (985) 871-0065		
K120-72 GENERAL ARRANGEMENT		
DATE:	REVISION NO.:	CO NO.:
11/25/2015		
SHEET 1 OF 4		

PART/DWG. NO.: **PRESENTATION**

4

3

2

1

4

3

2

1

D

D

C

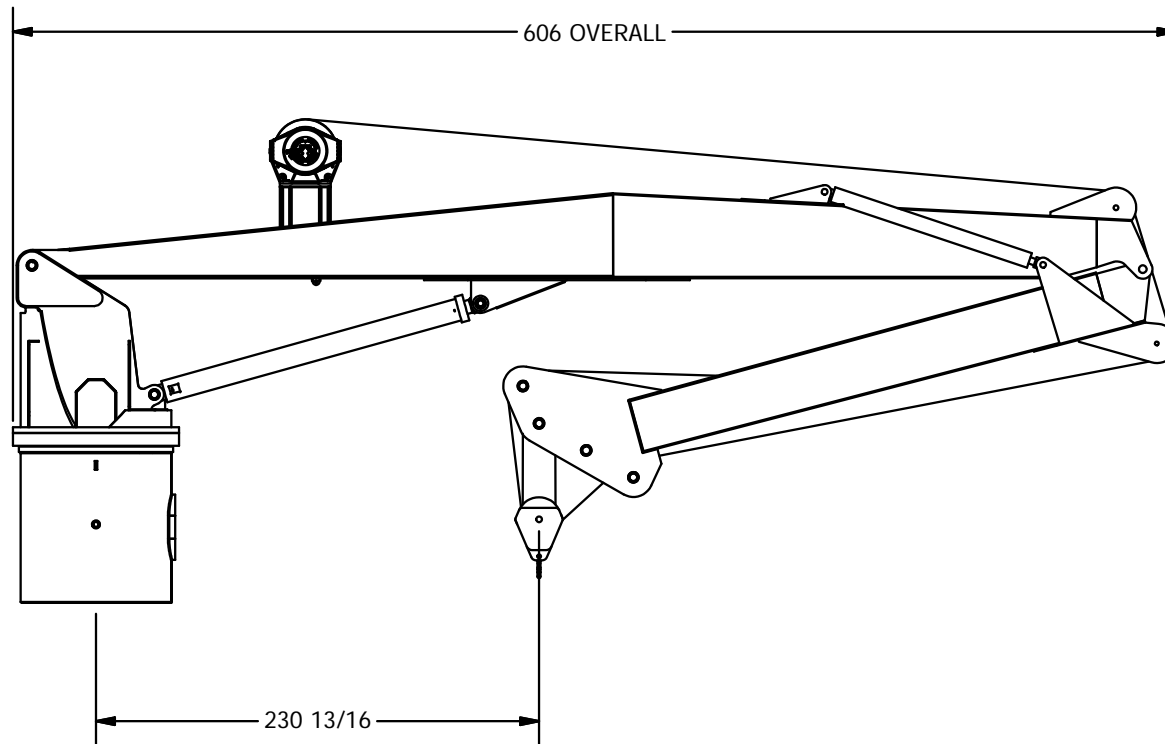
C

B

B

A

A



INFORMATION CONTAINED HEREON IS CONFIDENTIAL AND TRADE SECRET DO NOT DISCLOSE, USE OR REPRODUCE WITHOUT PRIOR WRITTEN APPROVAL FROM TECHCRANE INTERNATIONAL LLC.

DESIGNED BY: F. SHAD

DRAWN BY: lbaylis

WEIGHT: 62066 lbmass

APPROVED BY: SEE APPROVAL STAMP

FILE NAME: C:\WORK\DESIGNS\11 PARTS\300 BOOM\K SERIES PRELIMINARY\K120 ASSY.dwg

MATERIAL NOTES:
 1. BURN PER DIMENSIONS SHOWN.
 2. PLATE FLATNESS AFTER BURNING TO BE WITHIN ASTM SPECIFICATIONS.
 3. REFER TO API SPEC 2C LATEST EDITION.
 4. WHERE APPLICABLE - ROLL FORM PER DIMENSIONS SHOWN.
 5. WHERE APPLICABLE - TACK WELD AS REQUIRED TO SECURE ROLLED CAN.

DESIGN STATE: WorkInProgress

MATERIAL:

TECHCRANE INTERNATIONAL, LLC.
 17639 HARD HAT DRIVE COVINGTON, LA. 70435 U.S.A.
 PHONE (985) 871-0056 FAX (985) 871-0065

K120-72 GENERAL ARRANGEMENT

DATE: 11/25/2015

REVISION NO.:

CO NO.:

SHEET 2 OF 4

UNLESS OTHERWISE SPECIFIED ALL DIMENSIONS ARE IN INCHES [] INDICATES MILLIMETERS

TOLERANCES
 FRACTIONAL DIMENSIONS +1/16/-0
 SURFACE FINISHES 125√

PART/DWG. NO.:

PRESENTATION

4

3

2

1

4

3

2

1

D

D

C

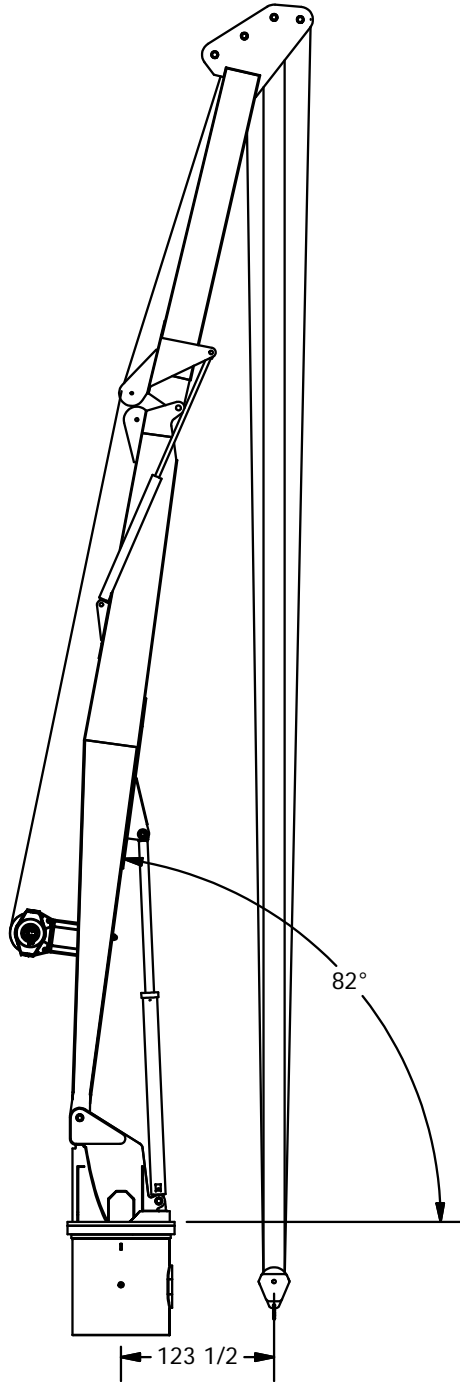
C

B

B

A

A



INFORMATION CONTAINED HEREON IS
CONFIDENTIAL AND TRADE SECRET
DO NOT DISCLOSE, USE OR REPRODUCE
WITHOUT PRIOR WRITTEN APPROVAL
FROM TECHCRANE INTERNATIONAL LLC.

UNLESS OTHERWISE SPECIFIED
ALL DIMENSIONS ARE IN INCHES
[] INDICATES MILLIMETERS

TOLERANCES
FRACTIONAL DIMENSIONS $\pm \frac{1}{16} / -0$
SURFACE FINISHES 125V

DESIGNED BY:
F. SHAD

DRAWN BY:
lбайтis

WEIGHT:
N/A

APPROVED BY:
SEE APPROVAL STAMP

FILE NAME:
C:\WORK\DESIGN\11 PARTS\300 BOOM\K SERIES PRELIMINARY\K120 ASSY.dwg

MATERIAL NOTES:
1. BURN PER DIMENSIONS SHOWN.
2. PLATE FLATNESS AFTER BURNING TO BE
WITHIN ASTM SPECIFICATIONS.
3. REFER TO API SPEC 2C LATEST EDITION.
4. WHERE APPLICABLE - ROLL FORM PER
DIMENSIONS SHOWN.
5. WHERE APPLICABLE - TACK WELD AS
REQUIRED TO SECURE ROLLED CAN.

DESIGN STATE:
WorkInProgress

MATERIAL:



TECHCRANE INTERNATIONAL, LLC.
17639 HARD HAT DRIVE COVINGTON, LA. 70435 U.S.A.
PHONE (985) 871-0056 FAX (985) 871-0065

K120-72 GENERAL ARRANGEMENT

DATE:
11/25/2015

REVISION NO.:

CO NO.:

SHEET 3 OF 4

PART/DWG. NO.:
PRESENTATION

4

3

2

1

4

3

2

1

D

D

C

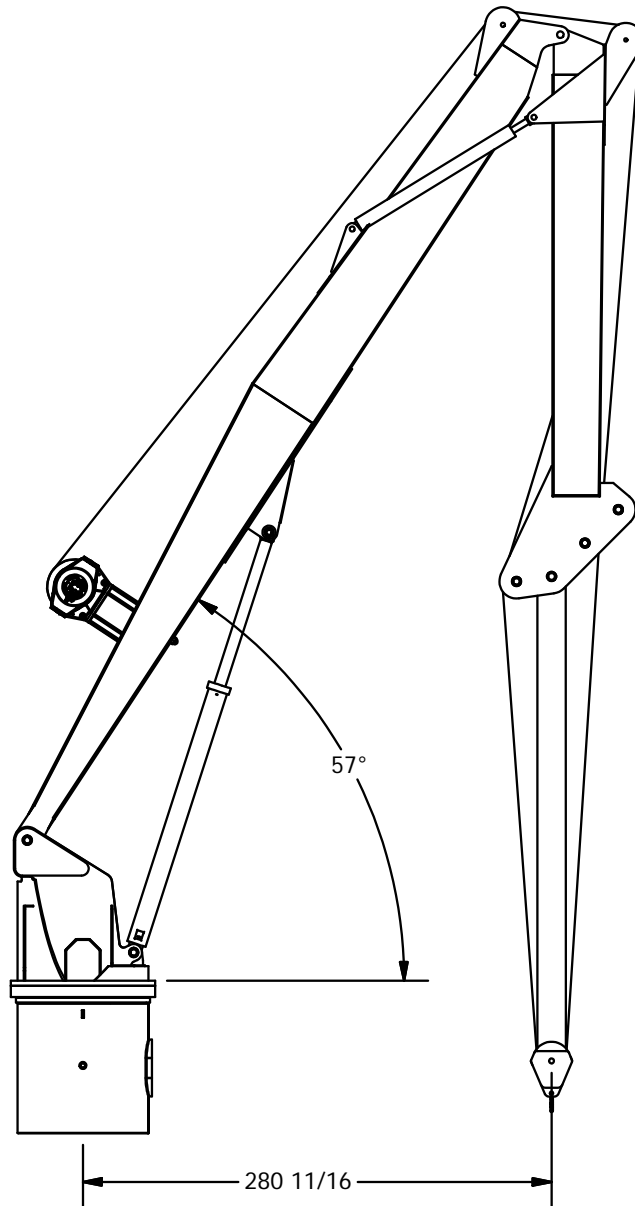
C

B


B

A

A



INFORMATION CONTAINED HEREON IS CONFIDENTIAL AND TRADE SECRET DO NOT DISCLOSE, USE OR REPRODUCE WITHOUT PRIOR WRITTEN APPROVAL FROM TECHCRANE INTERNATIONAL LLC. UNLESS OTHERWISE SPECIFIED ALL DIMENSIONS ARE IN INCHES [] INDICATES MILLIMETERS TOLERANCES FRACTIONAL DIMENSIONS $\pm \frac{1}{16} / -0$ SURFACE FINISHES 125V	DESIGNED BY: F. SHAD	MATERIAL NOTES: 1. BURN PER DIMENSIONS SHOWN. 2. PLATE FLATNESS AFTER BURNING TO BE WITHIN ASTM SPECIFICATIONS. 3. REFER TO API SPEC 2C LATEST EDITION. 4. WHERE APPLICABLE - ROLL FORM PER DIMENSIONS SHOWN. 5. WHERE APPLICABLE - TACK WELD AS REQUIRED TO SECURE ROLLED CAN.	
	DRAWN BY: lbaylis		
	WEIGHT: 62066 lbmass		
	APPROVED BY: SEE APPROVAL STAMP		DESIGN STATE: WorkInProgress
	FILE NAME: C:\WORK\DESIGN\11 PARTS\300 BOOM\K SERIES PRELIMINARY\K120.ASSY.dwg		MATERIAL:

 TECHCRANE INTERNATIONAL, LLC. 17639 HARD HAT DRIVE COVINGTON, LA. 70435 U.S.A. PHONE (985) 871-0056 FAX (985) 871-0065		
K120-72 GENERAL ARRANGEMENT		
DATE: 11/25/2015	REVISION NO.:	CO NO.:
SHEET 4 OF 4		

PART/DWG. NO.:

PRESENTATION

4

3

2

1