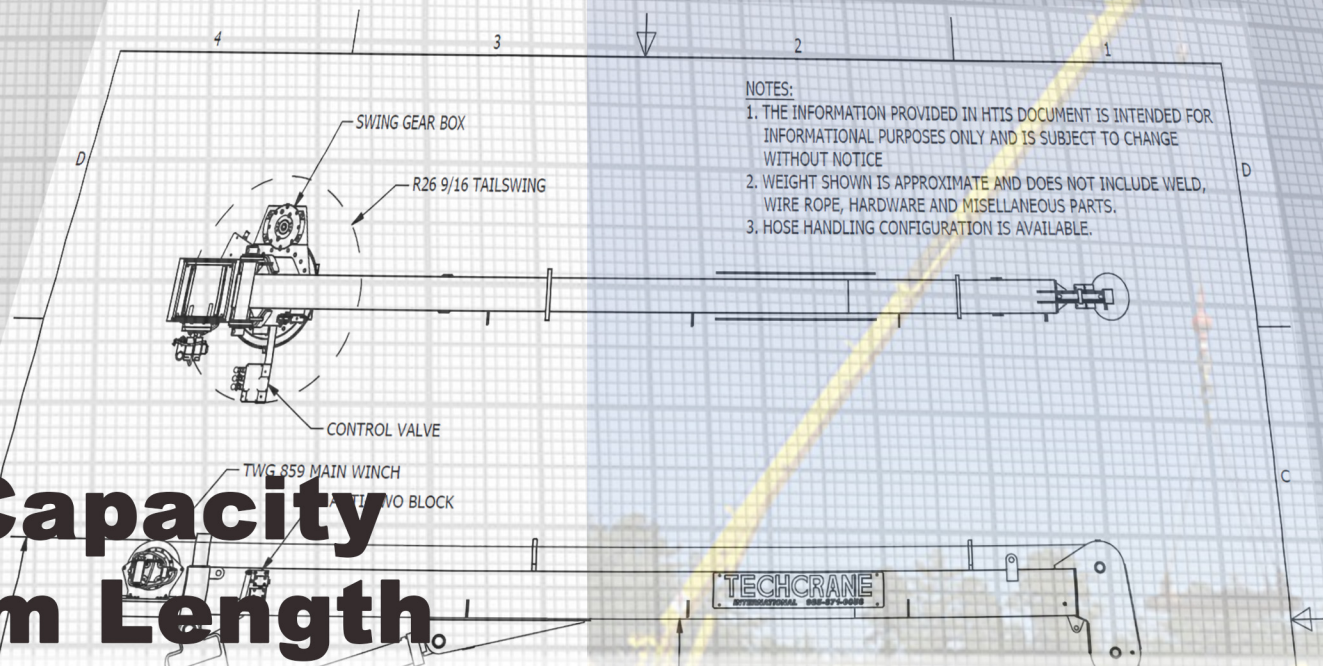


F7

Load Capacity
By Boom Length



US UNITS: BOOM LENGTH = 15 Feet				US UNITS: BOOM LENGTH = 20 Feet				US UNITS: BOOM LENGTH = 25 Feet				US UNITS: BOOM LENGTH = 30 Feet				US UNITS: BOOM LENGTH = 40 Feet				US UNITS: BOOM LENGTH = 50 Feet			
REACH (ft)	ANGLE (deg)	ONBOARD LOAD (STATIC) lbs	OFFBOARD LOAD (DYNAMIC) lbs	REACH (ft)	ANGLE (deg)	ONBOARD LOAD (STATIC) lbs	OFFBOARD LOAD (DYNAMIC) lbs	REACH (ft)	ANGLE (deg)	ONBOARD LOAD (STATIC) lbs	OFFBOARD LOAD (DYNAMIC) lbs	REACH (ft)	ANGLE (deg)	ONBOARD LOAD (STATIC) lbs	OFFBOARD LOAD (DYNAMIC) lbs	REACH (ft)	ANGLE (deg)	ONBOARD LOAD (STATIC) lbs	OFFBOARD LOAD (DYNAMIC) lbs	REACH (ft)	ANGLE (deg)	ONBOARD LOAD (STATIC) lbs	OFFBOARD LOAD (DYNAMIC) lbs
2	82.5	8,800	5,852	3.2	82.5	8,800	5,852	3.5	82.5	8,800	5,852	3.9	82.5	8,800	5,852	5	82.5	6,374	4,239	6	82.5	5,543	3,686
5	70.6	8,800	5,852	5	77.2	8,800	5,852	5	75	7,900	5,254	5	80.4	7,760	5,160	10	75.5	5,158	3,430	10	78.5	4,485	2,983
10	48.5	7,600	5,054	10	62.2	8,800	5,852	10	70	7,250	4,821	10	70.6	6,950	4,622	15	68	3,809	2,533	15	72.5	3,312	2,202
15	0	6,100	4,057	15	44.5	6,900	4,589	15	58	6,740	4,482	15	60.1	5,800	3,857	20	60	2,698	1,794	20	66.4	2,346	1,560
				20	0	5,500	3,658	20	39	5,820	3,870	20	48.3	4,530	3,012	25	51.3	2,063	1,372	25	60	1,794	1,193
								25	0	4,200	2,793	25	33.8	3,925	2,610	30	41.4	1,825	1,214	30	53	1,587	1,055
												30	0	3,100	2,062	35	29	1,587	1,055	35	45.6	1,380	918
																40	0	1,455	967	40	36.9	1,265	841
																				45	25.8	1,162	772
																				50	0	1,035	688

SI UNITS BOOM LENGTH = 4.6 Meters				SI UNITS BOOM LENGTH = 6 Meters				SI UNITS BOOM LENGTH = 7.6 Meters				SI UNITS BOOM LENGTH = 9 Meters				SI UNITS BOOM LENGTH = 12 Meters				SI UNITS BOOM LENGTH = 15 Meters			
REACH (m)	ANGLE (deg)	ONBOARD LOAD (STATIC) Kg	OFFBOARD LOAD (DYNAMIC) Kg	REACH (m)	ANGLE (deg)	ONBOARD LOAD (STATIC) Kg	OFFBOARD LOAD (DYNAMIC) Kg	REACH (m)	ANGLE (deg)	ONBOARD LOAD (STATIC) Kg	OFFBOARD LOAD (DYNAMIC) Kg	REACH (m)	ANGLE (deg)	ONBOARD LOAD (STATIC) Kg	OFFBOARD LOAD (DYNAMIC) Kg	REACH (m)	ANGLE (deg)	ONBOARD LOAD (STATIC) Kg	OFFBOARD LOAD (DYNAMIC) Kg	REACH (m)	ANGLE (deg)	ONBOARD LOAD (STATIC) Kg	OFFBOARD LOAD (DYNAMIC) Kg
0.6	82.5	4,000	2,660	1.0	82.5	4,000	2,660	1.1	82.5	4,000	2,660	1.2	82.5	4,000	2,660	1.5	82.5	2,897	1,927	1.8	82.5	2,520	1,675
1.5	70.6	4,000	2,660	1.5	77.2	4,000	2,660	1.5	75	3,591	2,388	1.5	80.4	3,527	2,346	3.0	75.5	2,344	1,559	3.0	78.5	2,039	1,356
3.0	48.5	3,455	2,297	3.0	62.2	4,000	2,660	3.0	70	3,295	2,191	3.0	70.6	3,159	2,101	4.6	68	1,731	1,151	4.6	72.5	1,505	1,001
4.6	0	2,773	1,844	4.6	44.5	3,136	2,086	4.6	58	3,064	2,037	4.6	60.1	2,636	1,753	6.1	60	1,226	816	6.1	66.4	1,066	709
				6.1	0	2,500	1,663	6.1	39	2,645	1,759	6.1	48.3	2,059	1,369	7.6	51.3	938	624	7.6	60	815	542
								7.6	0	1,909	1,270	7.6	33.8	1,784	1,186	9.1	41.4	830	552	9.1	53	721	480
												9.1	0	1,409	937	10.7	29	721	480	10.7	45.6	627	417
																12.2	0	661	440	12.2	36.9	575	382
																				13.7	25.8	528	351
																				15.2	0	470	313

LOAD CHART CREATOR: DSHAD 12/2018 rev1.0 - Values listed subject to change without notice. - Values reflect structural capacities and may vary with configuration via client specification. Offboard denotes a default CV=2. Sea State Load Charts are available by request and in conjunction with client supplied vessel data.

Designed and Manufactured
under the controls set forth
by



2C-0067

TECHCRANE

Techcrane Designs
Previously Approved By

