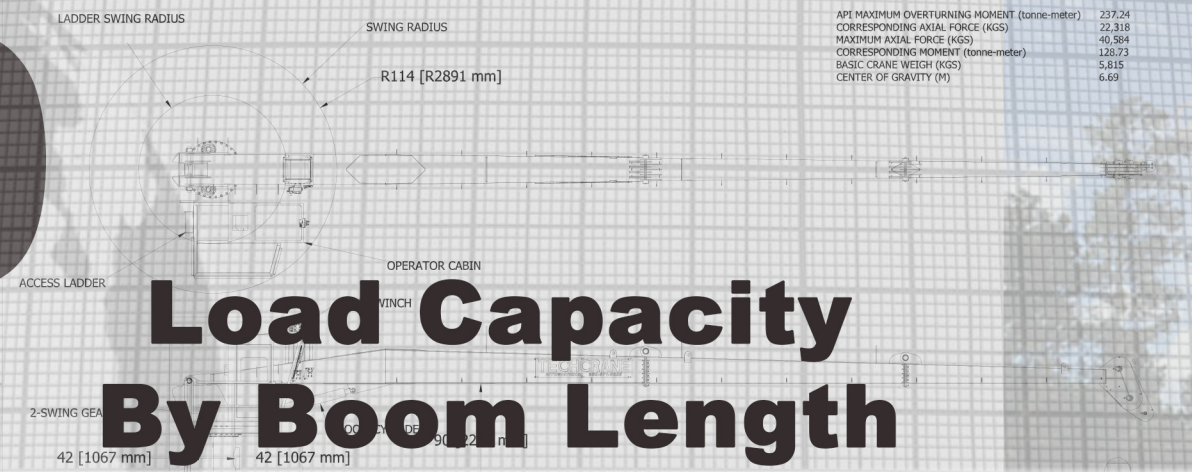


F30



NOTES:
 1.) BOTTOM SUPPORTED PLATFORM
 2.) HPU SUPPLIED BY CLIENT

API MAXIMUM OVERTURNING MOMENT (tonne-meter) 237.24
 CORRESPONDING AXIAL FORCE (KGS) 22,318
 MAXIMUM AXIAL FORCE (KGS) 49,584
 CORRESPONDING MOMENT (tonne-meter) 128.73
 BASIC CRANE WEIGHT (KGS) 5,815
 CENTER OF GRAVITY (M) 6.69

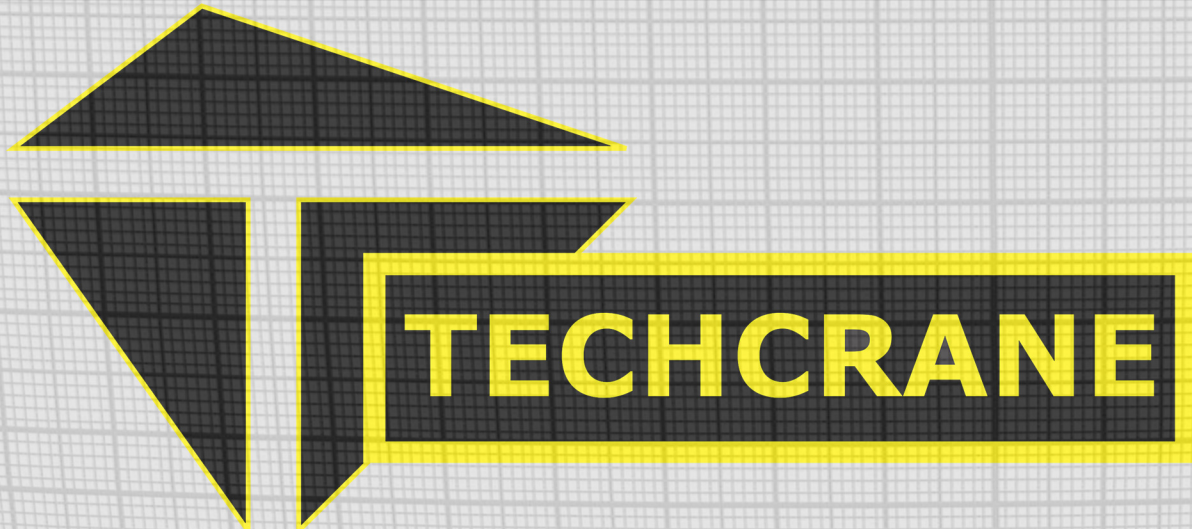
Load Capacity By Boom Length

US UNITS: BOOM LENGTH = 30 Feet				US UNITS: BOOM LENGTH = 40 Feet				US UNITS: BOOM LENGTH = 50 Feet				US UNITS: BOOM LENGTH = 60 Feet				US UNITS: BOOM LENGTH = 70 Feet				US UNITS: BOOM LENGTH = 80 Feet			
REACH (ft)	ANGLE (deg)	ONBOARD LOAD (STATIC) lbs	OFFBOARD LOAD (DYNAMIC) lbs	REACH (ft)	ANGLE (deg)	ONBOARD LOAD (STATIC) lbs	OFFBOARD LOAD (DYNAMIC) lbs	REACH (ft)	ANGLE (deg)	ONBOARD LOAD (STATIC) lbs	OFFBOARD LOAD (DYNAMIC) lbs	REACH (ft)	ANGLE (deg)	ONBOARD LOAD (STATIC) lbs	OFFBOARD LOAD (DYNAMIC) lbs	REACH (ft)	ANGLE (deg)	ONBOARD LOAD (STATIC) lbs	OFFBOARD LOAD (DYNAMIC) lbs	REACH (ft)	ANGLE (deg)	ONBOARD LOAD (STATIC) lbs	OFFBOARD LOAD (DYNAMIC) lbs
5	80	44,000	26,600	7.5	80	44,000	26,600	8.5	80.2	44,000	26,600	10	80	44,000	26,600	12.1	80	44,000	26,600	15	79.2	38,700	23,396
10	70.5	44,000	26,600	10	75.5	44,000	26,600	10	78.5	40,600	24,545	15	75.5	39,480	23,867	15	77.6	38,990	23,571	20	75.5	35,220	21,292
15	60	38,300	23,154	15	68	35,880	21,691	15	72.6	34,010	20,561	20	70.5	36,320	21,957	20	73.4	37,440	22,634	25	71.8	29,480	17,822
20	48.2	35,620	21,534	20	60	34,200	20,675	20	66.6	32,330	19,545	25	65.4	31,927	19,301	25	69.1	34,110	20,621	30	68	24,900	15,053
25	33.6	32,201	19,467	25	51.3	30,400	18,378	25	60.2	29,690	17,949	30	60	26,780	16,190	30	64.6	26,260	15,875	35	64.1	22,300	13,481
30	0	23,177	14,012	30	41.4	23,280	14,074	30	53.4	23,900	14,449	35	54.3	22,396	13,539	35	60	22,500	13,602	40	60	19,070	11,529
				35	29	19,470	11,771	35	45.9	19,770	11,952	40	48.2	19,109	11,552	40	55.2	19,200	11,607	45	55.8	17,860	10,797
				40	0	15,810	9,558	40	37.3	16,670	10,078	45	41.4	16,552	10,006	45	50	16,630	10,054	50	51.3	15,900	9,612
								45	26.5	14,250	8,615	50	33.6	14,506	8,770	50	44.4	14,570	8,808	55	46.6	13,870	8,385
								50	0	12,230	7,394	55	23.6	12,833	7,758	55	38.2	12,890	7,793	60	41.4	12,500	7,557
												60	0	9,852	5,956	60	31	11,490	6,946	65	35.7	10,800	6,529
																				70	29	9,820	5,937
																				75	20.4	8,856	5,354
																				80	0	6,230	3,766

SI UNITS BOOM LENGTH = 9 Meters				SI UNITS BOOM LENGTH = 12 Meters				SI UNITS BOOM LENGTH = 15 Meters				SI UNITS BOOM LENGTH = 18 Meters				SI UNITS BOOM LENGTH = 21 Meters				SI UNITS BOOM LENGTH = 24 Meters			
REACH (m)	ANGLE (deg)	ONBOARD LOAD (STATIC) Kg	OFFBOARD LOAD (DYNAMIC) Kg	REACH (m)	ANGLE (deg)	ONBOARD LOAD (STATIC) Kg	OFFBOARD LOAD (DYNAMIC) Kg	REACH (m)	ANGLE (deg)	ONBOARD LOAD (STATIC) Kg	OFFBOARD LOAD (DYNAMIC) Kg	REACH (m)	ANGLE (deg)	ONBOARD LOAD (STATIC) Kg	OFFBOARD LOAD (DYNAMIC) Kg	REACH (m)	ANGLE (deg)	ONBOARD LOAD (STATIC) Kg	OFFBOARD LOAD (DYNAMIC) Kg	REACH (m)	ANGLE (deg)	ONBOARD LOAD (STATIC) Kg	OFFBOARD LOAD (DYNAMIC) Kg
1.5	80	20,000	12,091	2.3	80	20,000	12,091	2.6	80.2	20,000	12,091	3.0	80	20,000	12,091	3.7	80	20,000	12,091	4.6	79.2	17,591	10,635
3.0	70.5	20,000	12,091	3.0	75.5	20,000	12,091	3.0	78.5	18,455	11,157	4.6	75.5	17,945	10,849	4.6	77.6	17,723	10,714	6.1	75.5	16,009	9,678
4.6	60	17,409	10,525	4.6	68	16,309	9,860	4.6	72.6	15,459	9,346	6.1	70.5	16,509	9,980	6.1	73.4	17,018	10,288	7.6	71.8	13,400	8,101
6.1	48.2	16,191	9,788	6.1	60	15,545	9,398	6.1	66.6	14,695	8,884	7.6	65.4	14,512	8,773	7.6	69.1	15,505	9,373	9.1	68	11,318	6,842
7.6	33.6	14,637	8,849	7.6	51.3	13,818	8,354	7.6	60.2	13,495	8,159	9.1	60	12,173	7,359	9.1	64.6	11,936	7,216	10.7	64.1	10,136	6,128
9.1	0	10,535	6,369	9.1	41.4	10,582	6,397	9.1	53.4	10,864	6,568	10.7	54.3	10,180	6,154	10.7	60	10,227	6,183	12.2	60	8,668	5,240
				10.7	29	8,850	5,350	10.7	45.9	8,986	5,433	12.2	48.2	8,686	5,251	12.2	55.2	8,727	5,276	13.7	55.8	8,118	4,908
				12.2	0	7,186	4,344	12.2	37.3	7,577	4,581	13.7	41.4	7,524	4,548	13.7	50	7,559	4,570	15.2	51.3	7,227	4,369
								13.7	26.5	6,477	3,916	15.2	33.6	6,594	3,986	15.2	44.4	6,623	4,004	16.8	46.6	6,305	3,811
								15.2	0	5,559	3,361	16.8	23.6	5,833	3,526	16.8	38.2	5,859	3,542	18.3	41.4	5,682	3,435
												18.3	0	4,478	2,707	18.3	31	5,223	3,157	19.8	35.7	4,909	2,968
																				21.3	29	4,464	2,698
																				22.9	20.4	4,025	2,434
																				24.4	0	2,832	1,712

LOAD CHART CREATOR: DSHAD 12/2018 rev1.0 - Values listed subject to change without notice. - Values reflect structural capacities and may vary with configuration via client specification. Offboard denotes a default CV=2. Sea State Load Charts are available by request and in conjunction with client supplied vessel data.

Designed and Manufactured
under the controls set forth



Techcrane Designs
Previously Approved By

