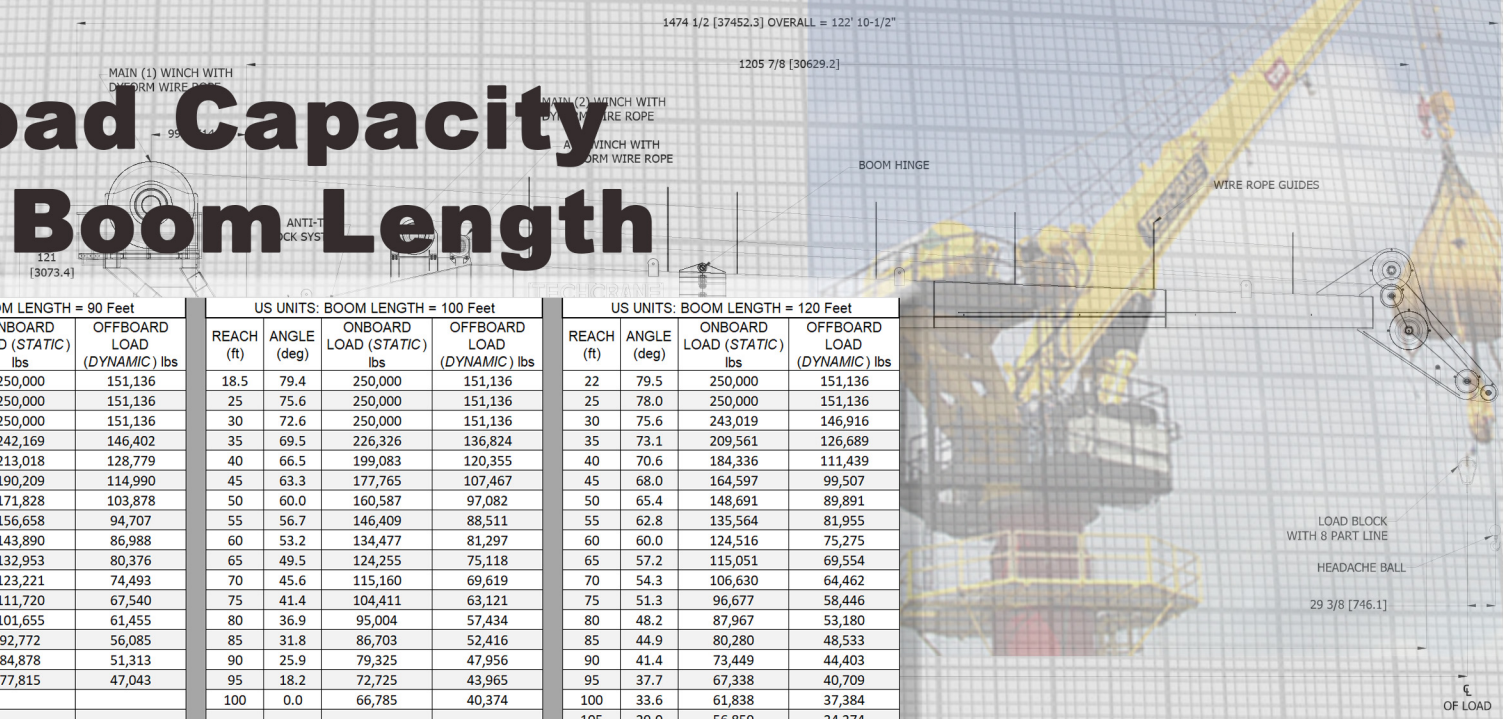


F250

Load Capacity By Boom Length



US UNITS: BOOM LENGTH = 80 Feet				US UNITS: BOOM LENGTH = 90 Feet				US UNITS: BOOM LENGTH = 100 Feet				US UNITS: BOOM LENGTH = 120 Feet			
REACH (ft)	ANGLE (deg)	ONBOARD LOAD (STATIC) lbs	OFFBOARD LOAD (DYNAMIC) lbs	REACH (ft)	ANGLE (deg)	ONBOARD LOAD (STATIC) lbs	OFFBOARD LOAD (DYNAMIC) lbs	REACH (ft)	ANGLE (deg)	ONBOARD LOAD (STATIC) lbs	OFFBOARD LOAD (DYNAMIC) lbs	REACH (ft)	ANGLE (deg)	ONBOARD LOAD (STATIC) lbs	OFFBOARD LOAD (DYNAMIC) lbs
15	79.2	250,000	151,136	16.5	79.5	250,000	151,136	18.5	79.4	250,000	151,136	22	79.5	250,000	151,136
20	75.6	250,000	151,136	20	77.2	250,000	151,136	25	75.6	250,000	151,136	25	78.0	250,000	151,136
25	71.8	250,000	151,136	25	73.9	250,000	151,136	30	72.6	250,000	151,136	30	75.6	243,019	146,916
30	68.0	250,000	151,136	30	70.6	242,169	146,402	35	69.5	226,326	136,824	35	73.1	209,561	126,689
35	64.1	225,800	136,506	35	67.1	213,018	128,779	40	66.5	199,083	120,355	40	70.6	184,336	111,439
40	60.0	201,621	121,889	40	63.6	190,209	114,990	45	63.3	177,765	107,467	45	68.0	164,597	99,507
45	55.8	182,137	110,110	45	60.0	171,828	103,878	50	60.0	160,587	97,082	50	65.4	148,691	89,891
50	51.3	166,057	100,389	50	56.3	156,658	94,707	55	56.7	146,409	88,511	55	62.8	135,564	81,955
55	46.6	152,524	92,207	55	52.4	143,890	86,988	60	53.2	134,477	81,297	60	60.0	124,516	75,275
60	41.4	140,930	85,199	60	48.2	132,953	80,376	65	49.5	124,255	75,118	65	57.2	115,051	69,554
65	35.7	130,614	78,962	65	43.8	123,221	74,493	70	45.6	115,160	69,619	70	54.3	106,630	64,462
70	29.0	118,423	71,592	70	39.0	111,720	67,540	75	41.4	104,411	63,121	75	51.3	96,677	58,446
75	20.4	107,754	65,142	75	33.6	101,655	61,455	80	36.9	95,004	57,434	80	48.2	87,967	53,180
80	0.0	98,338	59,450	80	27.3	92,772	56,085	85	31.8	86,703	52,416	85	44.9	80,280	48,533
				85	19.2	84,878	51,313	90	25.9	79,325	47,956	90	41.4	73,449	44,403
				90	0.0	77,815	47,043	95	18.2	72,725	43,965	95	37.7	67,338	40,709
								100	0.0	66,785	40,374	100	33.6	61,838	37,384
												105	29.0	56,859	34,374
												110	23.6	52,336	31,639
												115	16.6	48,204	29,142
												120	0.0	39,065	23,617

SI UNITS BOOM LENGTH = ## Meters				SI UNITS BOOM LENGTH = ## Meters				SI UNITS BOOM LENGTH = ## Meters				SI UNITS BOOM LENGTH = ## Meters			
REACH (m)	ANGLE (deg)	ONBOARD LOAD (STATIC) Kg	OFFBOARD LOAD (DYNAMIC) Kg	REACH (m)	ANGLE (deg)	ONBOARD LOAD (STATIC) Kg	OFFBOARD LOAD (DYNAMIC) Kg	REACH (m)	ANGLE (deg)	ONBOARD LOAD (STATIC) Kg	OFFBOARD LOAD (DYNAMIC) Kg	REACH (m)	ANGLE (deg)	ONBOARD LOAD (STATIC) Kg	OFFBOARD LOAD (DYNAMIC) Kg
4.6	79.2	113,636	68,698	5.0	79.4763	113,636	68,698	5.6	79.3791	113,636	68,698	6.7	79.4763	113,636	68,698
6.1	75.6	113,636	68,698	6.1	77.1995	113,636	68,698	7.6	75.5608	113,636	68,698	7.6	78.0149	113,636	68,698
7.6	71.8	113,636	68,698	7.6	73.9098	113,636	68,698	9.1	72.5792	113,636	68,698	9.1	75.5608	110,463	66,780
9.1	68.0	113,636	68,698	9.1	70.5646	110,077	66,546	10.7	69.5479	102,875	62,193	10.7	73.0793	95,255	57,586
10.7	64.1	102,636	62,048	10.7	67.1487	96,827	58,536	12.2	66.4555	90,492	54,707	12.2	70.5646	83,789	50,654
12.2	60.0	91,646	55,404	12.2	63.6445	86,459	52,268	13.7	63.2884	80,802	48,849	13.7	68.0102	74,817	45,230
13.7	55.8	82,790	50,050	13.7	60.0304	78,104	47,217	15.2	60.0304	72,994	44,128	15.2	65.4088	67,587	40,859
15.2	51.3	75,481	45,631	15.2	56.2795	71,208	43,049	16.8	56.6617	66,550	40,232	16.8	62.7522	61,620	37,252
16.8	46.6	69,329	41,912	16.8	52.3567	65,405	39,540	18.3	53.1571	61,126	36,953	18.3	60.0304	56,598	34,216
18.3	41.4	64,059	38,727	18.3	48.2141	60,433	36,535	19.8	49.4835	56,480	34,145	19.8	57.2318	52,296	31,615
19.8	35.7	59,370	35,892	19.8	43.7839	56,010	33,860	21.3	45.5961	52,345	31,645	21.3	54.3422	48,468	29,301
21.3	29.0	53,829	32,542	21.3	38.9622	50,782	30,700	22.9	41.4306	47,460	28,691	22.9	51.3438	43,944	26,566
22.9	20.4	48,979	29,610	22.9	33.5743	46,207	27,934	24.4	36.8886	43,184	26,107	24.4	48.2141	39,985	24,173
24.4	0.0	44,699	27,023	24.4	27.2799	42,169	25,493	25.9	31.8045	39,410	23,825	25.9	44.9233	36,491	22,060
				25.9	19.1979	38,581	23,324	27.4	25.855	36,057	21,798	27.4	41.4306	33,386	20,183
				27.4	0	35,371	21,383	29.0	18.2041	33,057	19,984	29.0	37.6776	30,608	18,504
								30.5	0	30,357	18,352	30.5	33.5743	28,108	16,993
												32.0	28.9697	25,845	15,624
												33.5	23.5684	23,789	14,382
												35.1	16.6063	21,911	13,246
												36.6	0	17,757	10,735

LOAD CHART CREATOR: DSHAD 12/2018 rev1.0 - Values listed subject to change without notice. - Values reflect structural capacities and may vary with configuration via client specification. Offboard denotes a default CV=2. See State Load Charts are available by request and in conjunction with client supplied vessel data.

Designed and Manufactured
under the controls set forth

by



2C-0067

TECHCRANE

Techcrane Designs
Previously Approved By

